

Happy
Mother's
Day

Mother's Day Riddle



Add or subtract. Map the answers to the letters and decode the riddle.

$$\begin{array}{r} \text{S)} \quad 251 \\ + 429 \\ \hline \end{array}$$

$$\begin{array}{r} \text{E)} \quad 140 \\ + 132 \\ \hline \end{array}$$

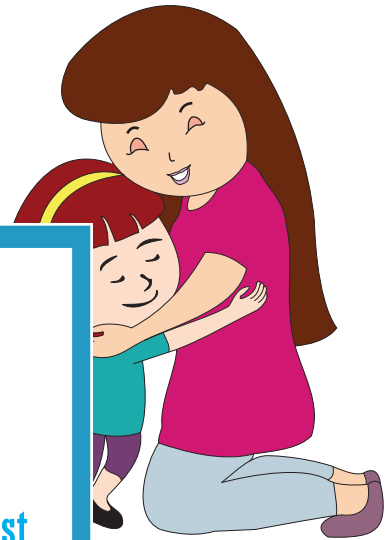
$$\begin{array}{r} \text{E)} \quad 587 \\ - 315 \\ \hline \end{array}$$

$$\begin{array}{r} \text{N)} \quad 436 \\ - 87 \\ \hline \end{array}$$

$$\begin{array}{r} \text{V)} \quad 334 \\ + 166 \\ \hline \end{array}$$

$$\begin{array}{r} \text{E)} \quad 304 \\ - 32 \\ \hline \end{array}$$

$$\begin{array}{r} \text{S)} \quad 893 \\ - 213 \\ \hline \end{array}$$



PREVIEW

Gain complete access to the largest
collection of worksheets in all subjects!

Members, please
log in to
download this
worksheet.

Not a member?
Please sign up to
gain complete
access.

www.mathworksheets4kids.com

My mother has 6 daughters and each of us has a brother. How many siblings are we?

680 272 500 272 349