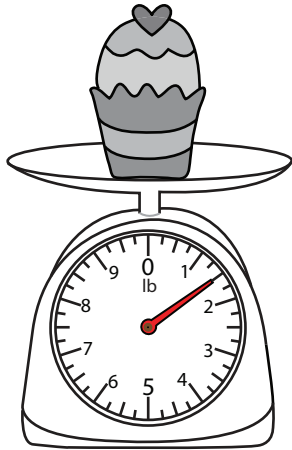


Measuring Weight - Customary Units

MS2

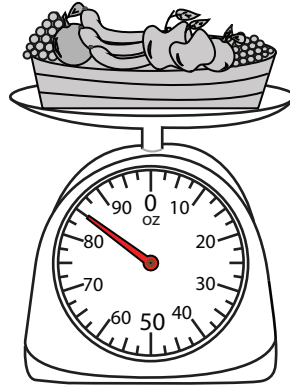
Measure the weight of each object.

1)



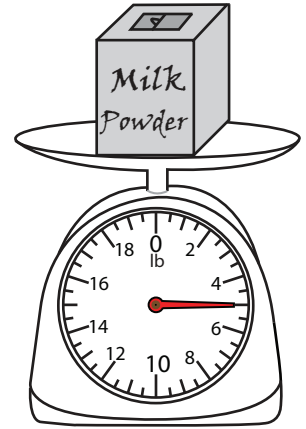
_____ lb

2)



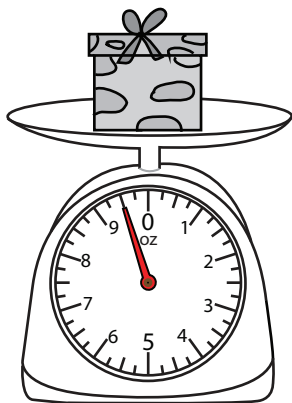
_____ oz

3)



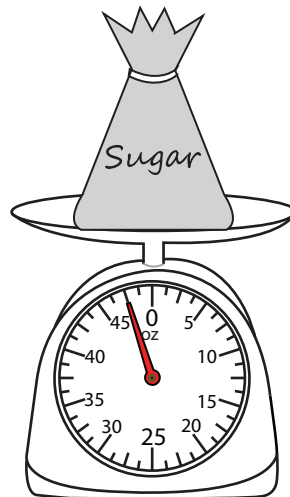
_____ lb

4)



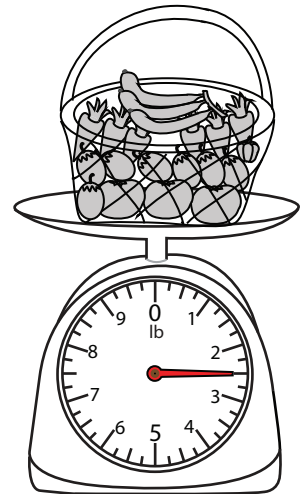
_____ oz

5)



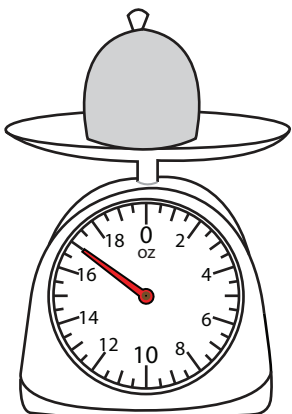
_____ oz

6)



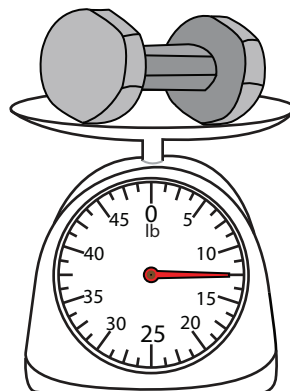
_____ lb

7)



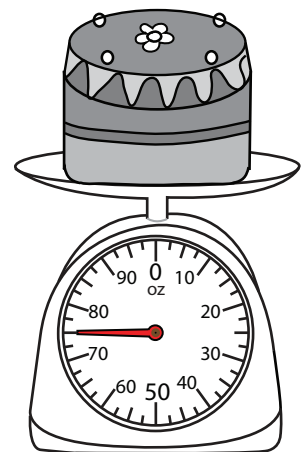
_____ oz

8)



_____ lb

9)



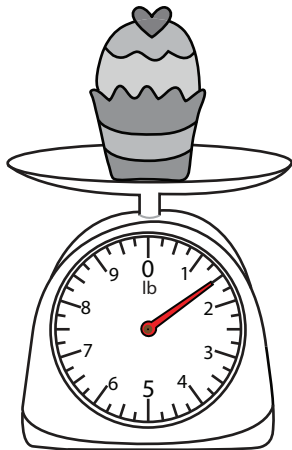
_____ oz

Measuring Weight - Customary Units

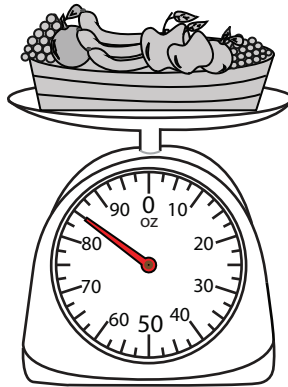
MS2

Measure the weight of each object.

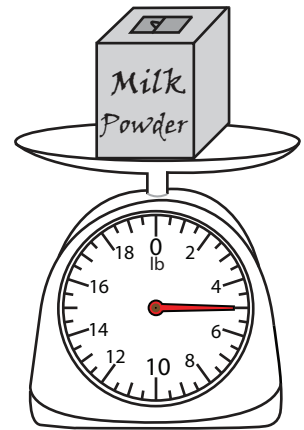
1)

1 1/2 lb

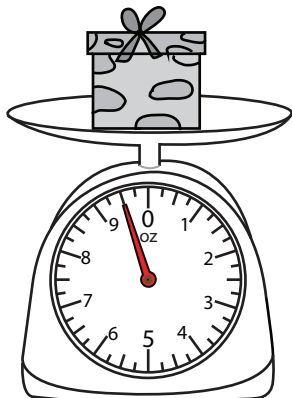
2)

85 oz

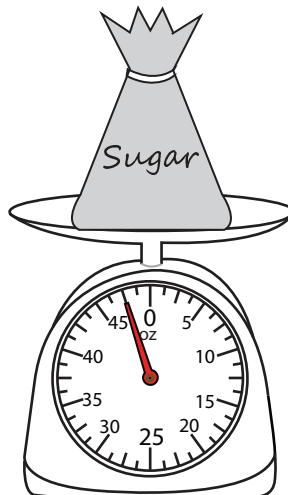
3)

5 lb

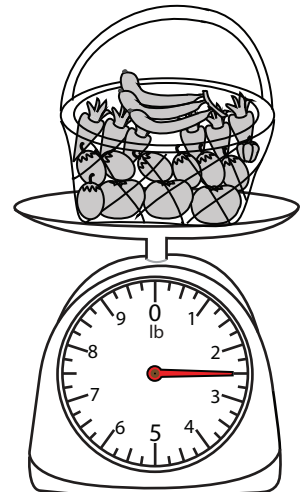
4)

9 1/2 oz

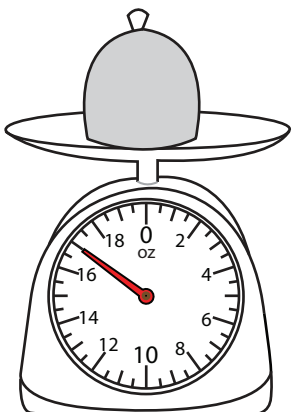
5)

47 1/2 oz

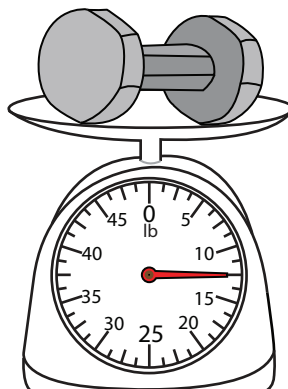
6)

2 1/2 lb

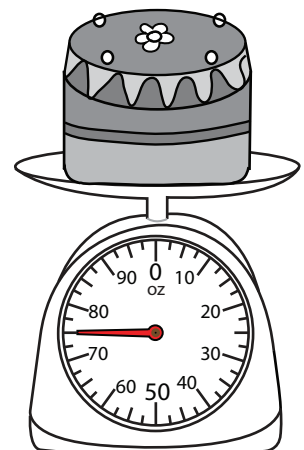
7)

17 oz

8)

12 1/2 lb

9)

75 oz