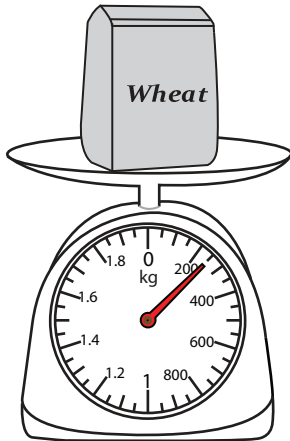


**Measuring Weight - Metric Units**

DS1

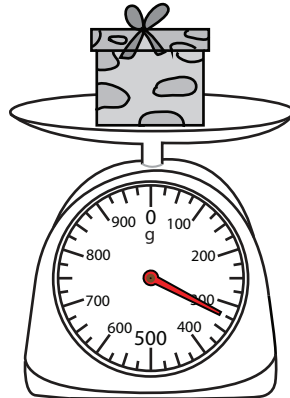
Measure the weight of each object.

1)



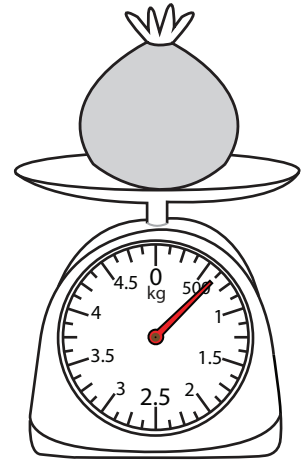
\_\_\_\_\_ g

2)



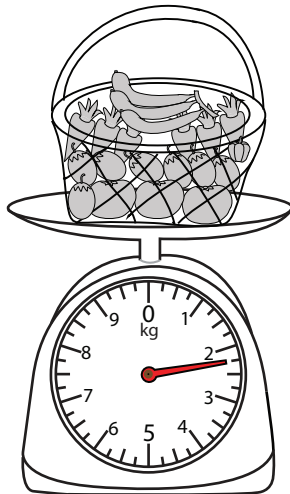
\_\_\_\_\_ g

3)



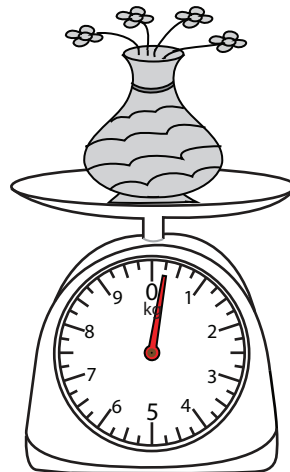
\_\_\_\_\_ g

4)



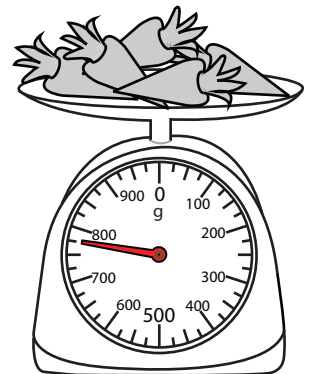
\_\_\_\_\_ kg

5)



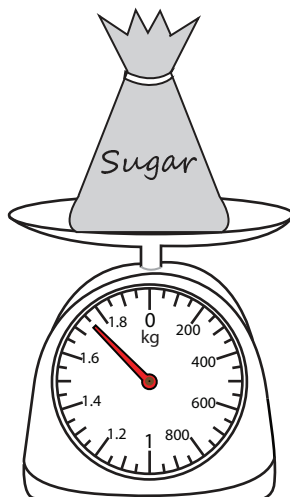
\_\_\_\_\_ g

6)



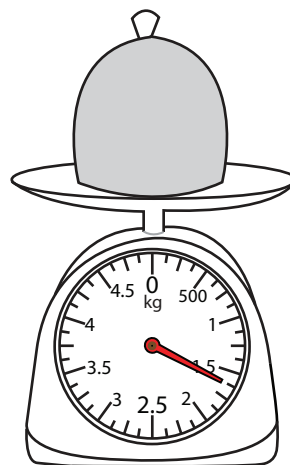
\_\_\_\_\_ g

7)



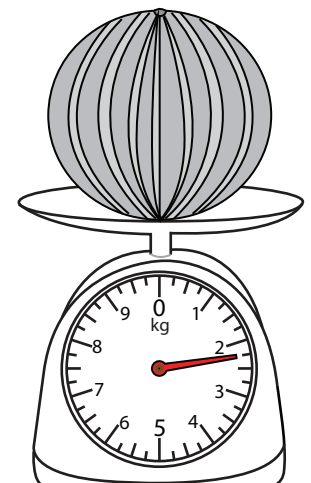
\_\_\_\_\_ kg

8)



\_\_\_\_\_ kg

9)



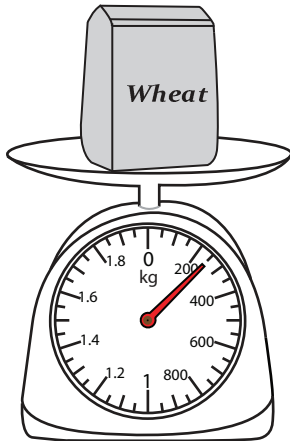
\_\_\_\_\_ kg

**Measuring Weight - Metric Units**

DS1

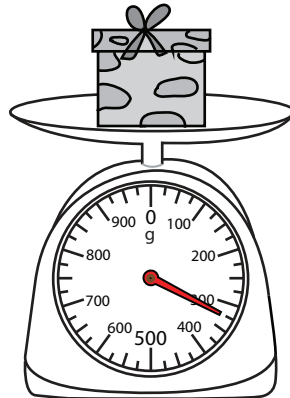
Measure the weight of each object.

1)



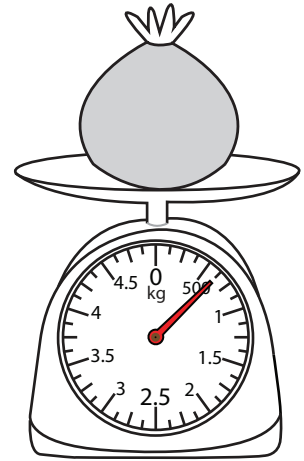
250 g

2)



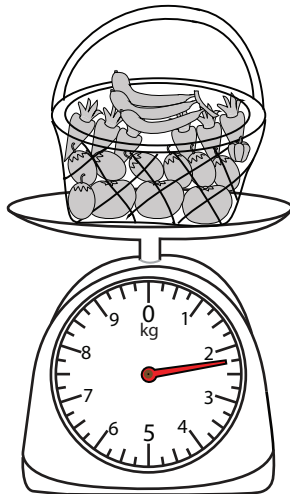
325 g

3)



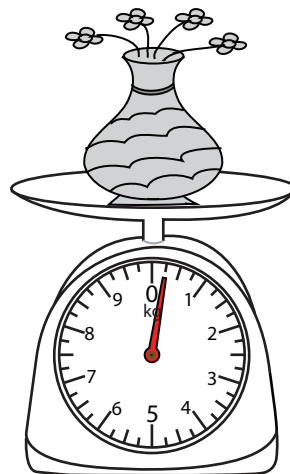
625 g

4)



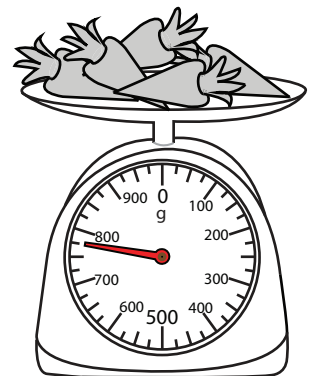
2.25 kg

5)



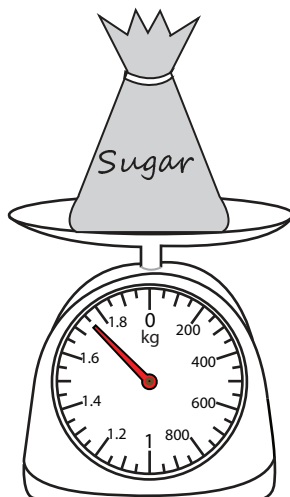
250 g

6)



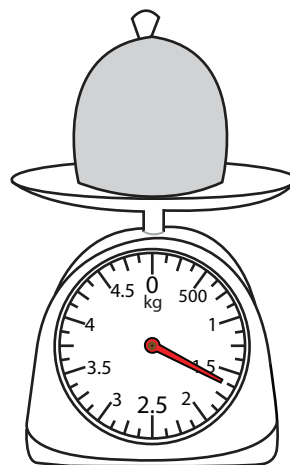
775 g

7)



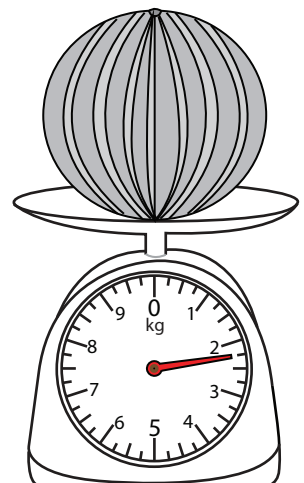
1.75 kg

8)



1.625 kg

9)



2.25 kg