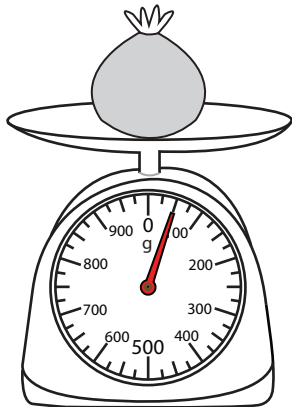


**Measuring Weight - Metric Units**

MS1

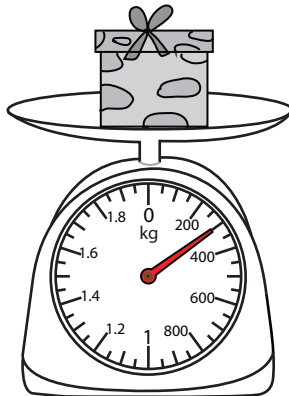
Measure the weight of each object.

1)



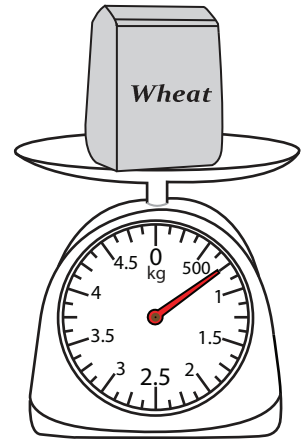
\_\_\_\_\_ g

2)



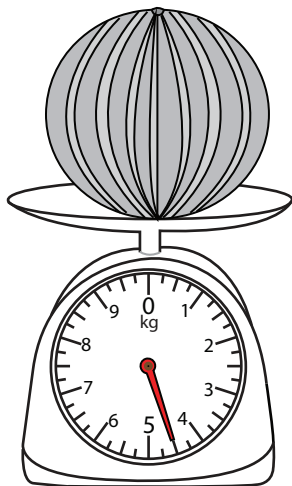
\_\_\_\_\_ g

3)



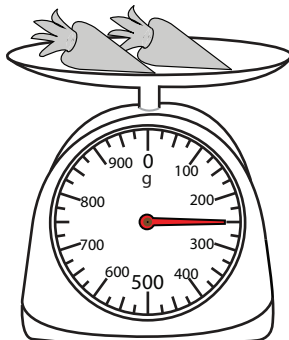
\_\_\_\_\_ kg

4)



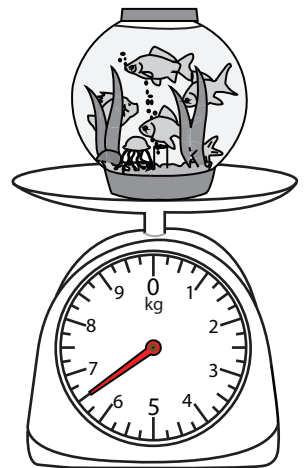
\_\_\_\_\_ kg

5)



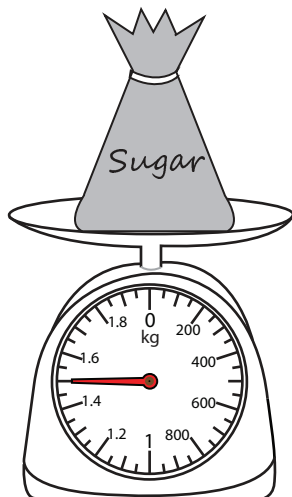
\_\_\_\_\_ g

6)



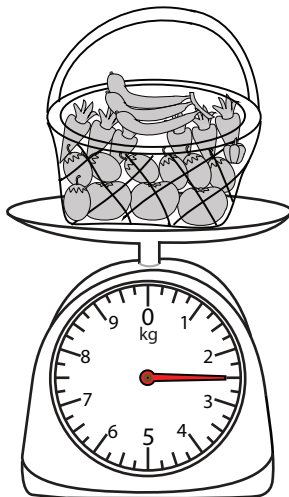
\_\_\_\_\_ kg

7)



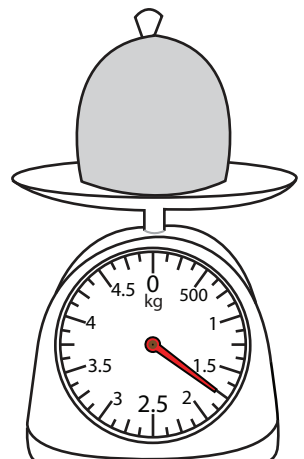
\_\_\_\_\_ kg

8)



\_\_\_\_\_ kg

9)



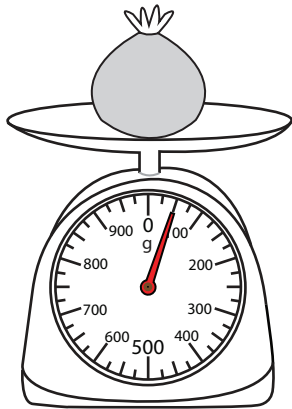
\_\_\_\_\_ kg

**Measuring Weight - Metric Units**

MS1

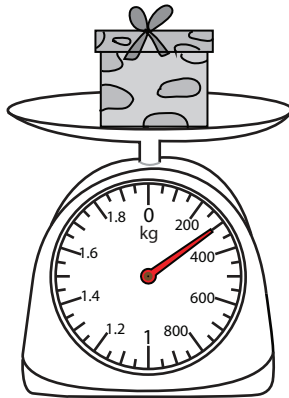
Measure the weight of each object.

1)



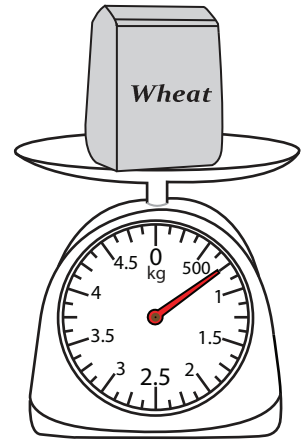
50 g

2)



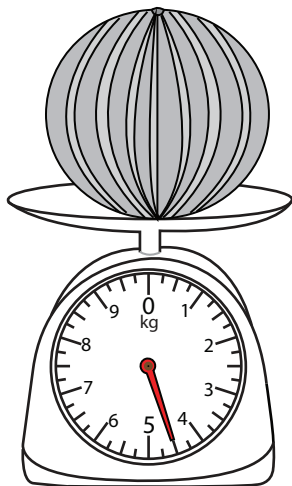
300 g

3)



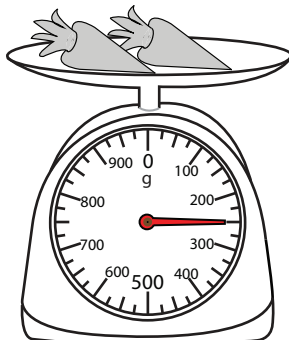
750 g

4)



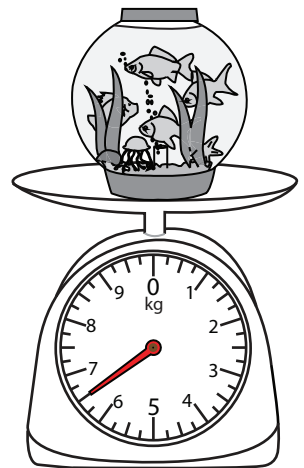
4.5 kg

5)



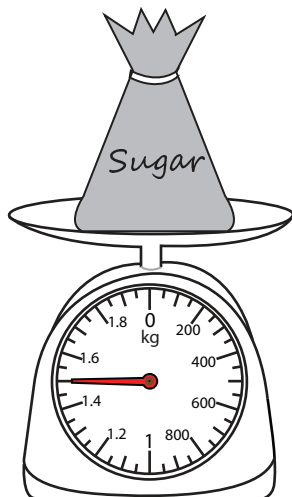
250 g

6)



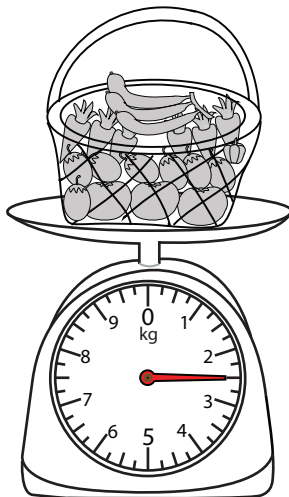
6.5 kg

7)



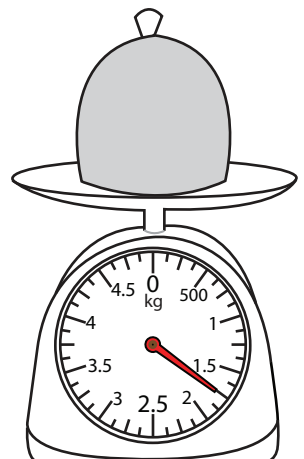
1.5 kg

8)



2.5 kg

9)



1.75 kg