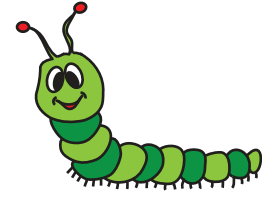


Name : \_\_\_\_\_

Score : \_\_\_\_\_

# Addition Equation

Sheet 1



Find the missing number in each problem.

1)  $1 + 5 = 3 + \square$

2)  $2 + \square = 4 + 6$

3)  $\square + 6 = 4 + 9$

4)  $1 + 1 = \square + 2$

5)  $8 + \square = 2 + 7$

6)  $\square + 3 = 5 + 7$

7)  $0 + 3 = \square + 1$

8)  $6 + 2 = 3 + \square$

9)  $\square + 2 = 6 + 5$

10)  $8 + \square = 7 + 9$

11)  $2 + 5 = 4 + \square$

12)  $\square + 0 = 1 + 3$

13)  $7 + \square = 6 + 8$

14)  $5 + 4 = \square + 6$

15)  $\square + 1 = 3 + 2$

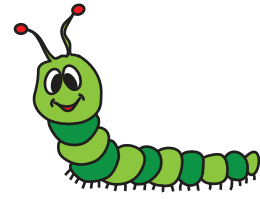
16)  $6 + 9 = 8 + \square$

17)  $8 + 9 = \square + 8$

18)  $2 + \square = 0 + 6$

**Addition Equation**

Sheet 1



Find the missing number in each problem.

1)  $1 + 5 = 3 + \boxed{3}$

2)  $2 + \boxed{8} = 4 + 6$

3)  $\boxed{7} + 6 = 4 + 9$

4)  $1 + 1 = \boxed{0} + 2$

5)  $8 + \boxed{1} = 2 + 7$

6)  $\boxed{9} + 3 = 5 + 7$

7)  $0 + 3 = \boxed{2} + 1$

8)  $6 + 2 = 3 + \boxed{5}$

9)  $\boxed{9} + 2 = 6 + 5$

10)  $8 + \boxed{8} = 7 + 9$

11)  $2 + 5 = 4 + \boxed{3}$

12)  $\boxed{4} + 0 = 1 + 3$

13)  $7 + \boxed{7} = 6 + 8$

14)  $5 + 4 = \boxed{3} + 6$

15)  $\boxed{4} + 1 = 3 + 2$

16)  $6 + 9 = 8 + \boxed{7}$

17)  $8 + 9 = \boxed{9} + 8$

18)  $2 + \boxed{4} = 0 + 6$