

Addition

No regrouping: S2

$$\begin{array}{r} 1) \quad 423 \\ + \quad 52 \\ \hline \end{array}$$

$$\begin{array}{r} 2) \quad 735 \\ + \quad 13 \\ \hline \end{array}$$

$$\begin{array}{r} 3) \quad 36 \\ + \quad 523 \\ \hline \end{array}$$

$$\begin{array}{r} 4) \quad 64 \\ + \quad 230 \\ \hline \end{array}$$

$$\begin{array}{r} 5) \quad 15 \\ + \quad 982 \\ \hline \end{array}$$

$$6) \quad 152$$

$$7) \quad 840$$

$$\begin{array}{r} 8) \quad 317 \\ + \quad 41 \\ \hline \end{array}$$

$$\begin{array}{r} 9) \quad 601 \\ + \quad 90 \\ \hline \end{array}$$

PREVIEW

Gain complete access to the largest collection of worksheets in all subjects!

Members, please log in to download this worksheet.

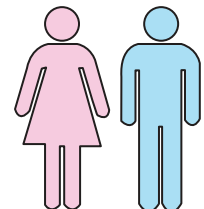
Not a member? Please sign up to gain complete access.

www.mathworksheets4kids.com

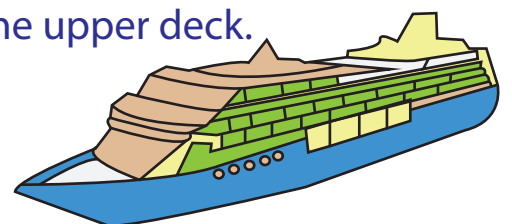
$$\begin{array}{r} 12) \quad 416 \\ + \quad 53 \\ \hline \end{array}$$

- 13) Philip Tradin employees.

nd 75 female he company?



- 14) Emerald Cruise Traveler has 235 cabins in the upper deck. The main deck has 42 more cabins than the upper deck. How many cabins are in the main deck?



Addition

No regrouping: S2

$$\begin{array}{r} 1) \quad 423 \\ + \quad 52 \\ \hline \quad 475 \end{array}$$

$$\begin{array}{r} 2) \quad 735 \\ + \quad 13 \\ \hline \quad 748 \end{array}$$

$$\begin{array}{r} 3) \quad 36 \\ + \quad 523 \\ \hline \quad 559 \end{array}$$

$$\begin{array}{r} 4) \quad 64 \\ + \quad 230 \\ \hline \quad 294 \end{array}$$

$$\begin{array}{r} 5) \quad 15 \\ + \quad 982 \\ \hline \quad 997 \end{array}$$

$$6) \quad 152$$

$$7) \quad 840$$

$$\begin{array}{r} 8) \quad 317 \\ + \quad 41 \\ \hline \quad 358 \end{array}$$

$$\begin{array}{r} 9) \quad 601 \\ + \quad 90 \\ \hline \quad 691 \end{array}$$

PREVIEW

Gain complete access to the largest collection of worksheets in all subjects!

Members, please log in to download this worksheet.

Not a member? Please sign up to gain complete access.

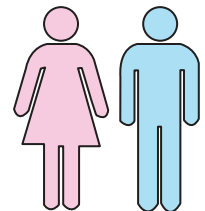
www.mathworksheets4kids.com

$$\begin{array}{r} 12) \quad 416 \\ + \quad 53 \\ \hline \quad 469 \end{array}$$

- 13) Philip Tradin employees.

289

nd 75 female he company?



- 14) Emerald Cruise Traveler has 235 cabins in the upper deck. The main deck has 42 more cabins than the upper deck. How many cabins are in the main deck?

277

