

Addition

Regrouping: S5

$$\begin{array}{r} 1) \quad 948 \\ + \quad 74 \\ \hline \end{array}$$

$$\begin{array}{r} 2) \quad 575 \\ + \quad 68 \\ \hline \end{array}$$

$$\begin{array}{r} 3) \quad 33 \\ + 117 \\ \hline \end{array}$$

$$\begin{array}{r} 4) \quad 28 \\ + 296 \\ \hline \end{array}$$

$$\begin{array}{r} 5) \quad 759 \\ + \quad 29 \\ \hline \end{array}$$

$$6) \quad 46$$

$$7) \quad 37$$

$$\begin{array}{r} 8) \quad 675 \\ + \quad 42 \\ \hline \end{array}$$

$$\begin{array}{r} 9) \quad 124 \\ + \quad 58 \\ \hline \end{array}$$

$$\begin{array}{r} 12) \quad 85 \\ + 445 \\ \hline \end{array}$$

PREVIEW

Gain complete access to the largest collection of worksheets in all subjects!

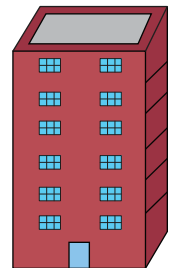
Members, please log in to download this worksheet.

Not a member? Please sign up to gain complete access.

www.mathworksheets4kids.com

13) Ebenezer Co Tower A condominium dwelling unit

ent community. ins 73 nity?



14) Hot Sip Coffee Shop sold 920 cups of coffee on weekdays and 89 cups of coffee on weekends. How many cups of coffee did they sell in a week?



Answer Key**Addition**

Regrouping: S5

$$\begin{array}{r} 1) \quad 948 \\ + \quad 74 \\ \hline 1022 \end{array}$$

$$\begin{array}{r} 2) \quad 575 \\ + \quad 68 \\ \hline 643 \end{array}$$

$$\begin{array}{r} 3) \quad 33 \\ + 117 \\ \hline 150 \end{array}$$

$$\begin{array}{r} 4) \quad 28 \\ + 296 \\ \hline 324 \end{array}$$

$$\begin{array}{r} 5) \quad 759 \\ + \quad 29 \\ \hline 788 \end{array}$$

$$6) \quad 46 \quad 7) \quad 37$$

$$\begin{array}{r} 8) \quad 675 \\ + \quad 42 \\ \hline 717 \end{array}$$

$$\begin{array}{r} 9) \quad 124 \\ + \quad 58 \\ \hline 182 \end{array}$$

Gain complete access to the largest collection of worksheets in all subjects!

Members, please log in to download this worksheet.

Not a member? Please sign up to gain complete access.

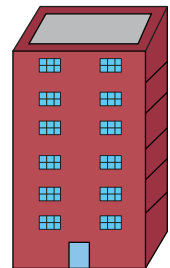
www.mathworksheets4kids.com

$$\begin{array}{r} 12) \quad 85 \\ + 445 \\ \hline 530 \end{array}$$

13) Ebenezer Co
Tower A cor
dwelling un

322

ent community.
ins 73
ity?



14) Hot Sip Coffee Shop sold 920 cups of coffee on weekdays and 89 cups of coffee on weekends. How many cups of coffee did they sell in a week?

1009

