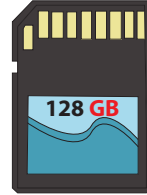


Name : _____

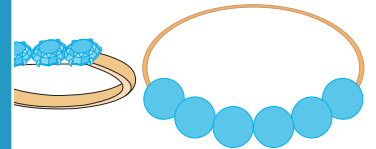
Three-Digit Addition

Sheet 2

- 1) Ruben has a 128 GB memory card in which he has stored his office files. He buys a 164 GB memory card to meet a new requirement. How much space in all does he have now?



- 2) Mia bought a gold ring for \$595 and a matching bracelet for \$195. How much did she spend in total on her purchase of jewelry?



- 3) Gabriel has 855 baseball cards altogether in his collection. He buys 145 more. How many cards does he have now?

PREVIEW

Gain complete access to the largest collection of worksheets in all subjects!

Members, please log in to download this worksheet.

Not a member? Please sign up to gain complete access.

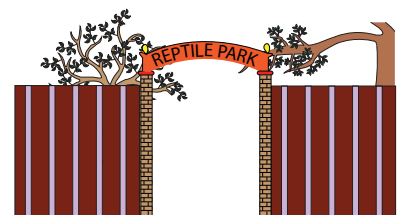
www.mathworksheets4kids.com



- 4) Patricia bought a bicycle for \$125 on the first day and 925 more on the second day. How much did she spend in total over the two days?



- 5) A reptile park houses 210 varieties of lizards and 140 varieties of snakes. How many varieties in all does the reptile park shelter?



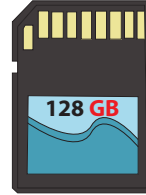
Name : _____

Answer key

Three-Digit Addition

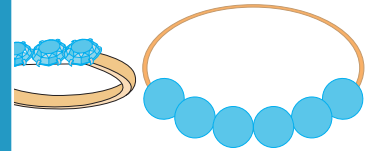
Sheet 2

- 1) Ruben has a 128 GB memory card in which he has stored his office files. He buys a 164 GB memory card to meet a new requirement. How much space in all does he have now?



292 GB

- 2) Mia bought a gold ring for \$595 and a matching bracelet for \$195. How much did she spend in total on her purchase of jewelry?



\$790

- 3) Gabriel has 855 baseball cards altogether in his collection. He buys 483 more cards. How many cards does he have now?

Gain complete access to the largest collection of worksheets in all subjects!



1,380 cards

- 4) Patricia bought a bicycle for \$1,200. She rode it for 350 miles on the first day and 925 miles on the second day. How many miles in all did she ride on the two days?

PREVIEW

Members, please log in to download this worksheet.

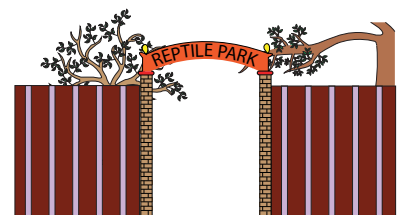
Not a member? Please sign up to gain complete access.

www.mathworksheets4kids.com



1,575 miles

- 5) A reptile park houses 210 varieties of lizards and 140 varieties of snakes. How many varieties in all does the reptile park shelter?



350 varieties