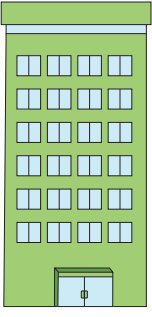
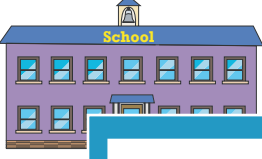





Comparing Heights

Compare the heights of the buildings and write "taller" or "shorter" as relevant.

Apartment	School	Shopping Mall	Hospital	House
 57 feet	 20 feet	 45 feet	 15 feet	 13 feet

PREVIEW

Gain complete access to the largest collection of worksheets in all subjects!

Members, please log in to download this worksheet.

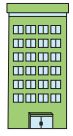

Not a member? Please sign up to gain complete access.

www.mathworksheets4kids.com

1) The  is _____ than the .

2) The  is _____ than the .

3) The  is _____ than the .

4) The  is _____ than the .

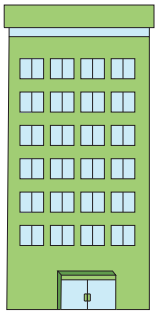
5) Which buildings are taller than the hospital?

6) Which buildings are shorter than the shopping mall?

Comparing Heights

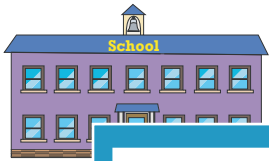
Compare the heights of the buildings and write "taller" or "shorter" as relevant.

Apartment



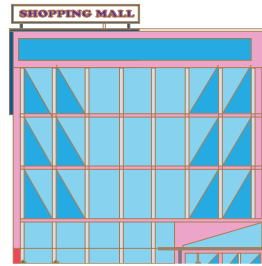
57 feet

School



20 feet

Shopping Mall



40 feet

Hospital



15 feet

House



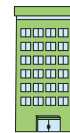
13 feet

1) The



is

than the



_____.

2) The



is

than the



_____.

3) The



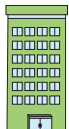
is

than the



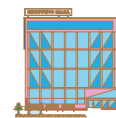
_____.

4) The



is

than the



_____.

5) Which buildings are taller than the hospital?

Shopping mall and apartment

6) Which buildings are shorter than the shopping mall?

Hospital, school, and house

PREVIEW

Gain complete access to the largest collection of worksheets in all subjects!

Members, please log in to download this worksheet.

Not a member? Please sign up to gain complete access.

www.mathworksheets4kids.com