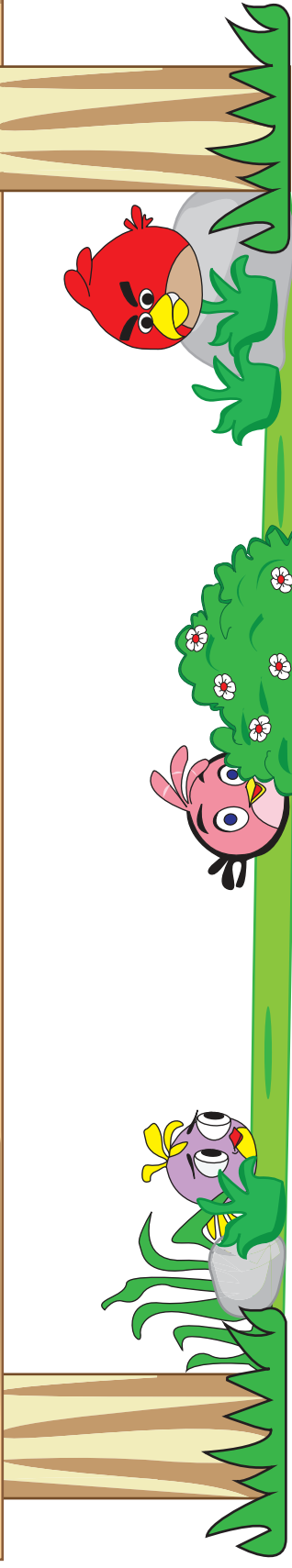


Counting Backward by 12s

Count backward by 12s, and fill in the missing numbers.

588	564	540	516	492
480	456	432	408	384
	336	324	288	276
240	228	192	180	144
108		72	48	12



Counting Backward by 12s

Count backward by 12s, and fill in the missing numbers.

600	588	576	564	552	540	528	516	504	492
480	468	456	444	432	420	408	396	384	372
360	348	336	324	312	300	288	276	264	252
240	228	216	204	192	180	168	156	144	132
120	108	96	84	72	60	48	36	24	12

