

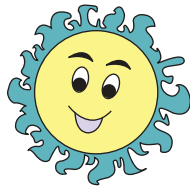
Estimating Time : Mixed

Sheet 1

Choose the appropriate time unit for each action / activity.

1) Duration of sunlight in a day

- about 50 seconds
- about 36 minutes
- about 9 hours



2) Christmas break

- about 6 hours
- about 2 weeks
- about 8 months



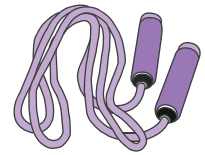
3) Home delivery of an online order

- about 4 hours
- about 2 days
- about 3 weeks



4) To skip 25 times

- about 7 minutes
- about 12 hours
- about 4 days



5) Duration of a lightning stroke

- about 11 hours
- about 3 seconds
- about 25 minutes



6) Spring season

- about a day
- about 2 weeks
- about 3 months



7) A family vacation

- about 34 minutes
- about 5 hours
- about 3 days



8) Duration of a show at a Planetarium

- about 45 minutes
- about 7 hours
- about 2 days



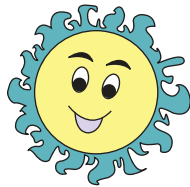
Estimating Time : Mixed

Sheet 1

Choose the appropriate time unit for each action / activity.

1) Duration of sunlight in a day

- about 50 seconds
- about 36 minutes
- about 9 hours



2) Christmas break

- about 6 hours
- about 2 weeks
- about 8 months



3) Home delivery of an online order

- about 4 hours
- about 2 days
- about 3 weeks



4) To skip 25 times

- about 7 minutes
- about 12 hours
- about 4 days



5) Duration of a lightning stroke

- about 11 hours
- about 3 seconds
- about 25 minutes



6) Spring season

- about a day
- about 2 weeks
- about 3 months



7) A family vacation

- about 34 minutes
- about 5 hours
- about 3 days



8) Duration of a show at a Planetarium

- about 45 minutes
- about 7 hours
- about 2 days

