

Abbreviation - MCQ

Choose the correct abbreviation from the options given below.

1. Doctor of Philosophy

- a) DPhil. b) Drphil.
c) D.Ph. d) Ph.D.



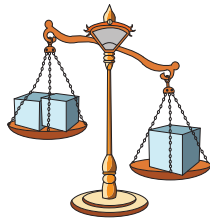
2. Mountain

- a) Mo. b) Mtn.
c) Mn. d) Mu.



3. Gram

- a) g. b) gm.
c) grm. d) G.



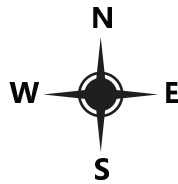
4. Thursday

- a) Thd. b) Thur.
c) Thurs. d) Thud.



5. North

- a) N. b) Nr.
c) Nor. d) Nth.



6. Professor

- a) Pr. b) Prf.
c) Prof. d) Prs.



7. Avenue

- a) Av. b) Ave.
c) Avn. d) Ae.



8. July

- a) Jy. b) Ju.
c) Juy. d) Jul.



Abbreviation - MCQ

Choose the correct abbreviation from the options given below.

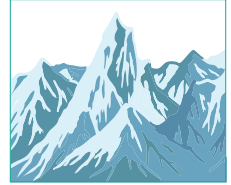
1. Doctor of Philosophy

- a) DPhil. b) Drphil.
c) D.Ph. d) Ph.D.



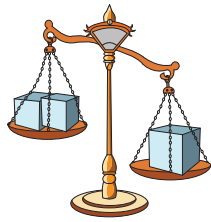
2. Mountain

- a) Mo. b) Mtn.
c) Mn. d) Mu.



3. Gram

- a) g. b) gm.
c) grm. d) G.



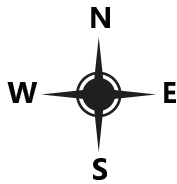
4. Thursday

- a) Thd. b) Thur.
 c) Thurs. d) Thud.



5. North

- a) N. b) Nr.
c) Nor. d) Nth.



6. Professor

- a) Pr. b) Prf.
 c) Prof. d) Prs.



7. Avenue

- a) Av. b) Ave.
c) Avn. d) Ae.



8. July

- a) Jy. b) Ju.
c) Juy. d) Jul.

