



Editing and Proofreading

Use the proofreading marks to correct the sentences. Write the number of mistakes in each category.

1) Its going to rain later today.

2) if you work hard you will pass the test.

3) i packed a sandwich for my brother.

4) My favo

5) They're

6) We need eggs milk and cheese for the store.

7) My favo

8) Are you going

9) Billy shouted, m

10) The bak

PREVIEW

Gain complete access to the largest collection of worksheets in all subjects!

Members, please log in to download this worksheet.

Not a member? Please sign up to gain complete access.

www.mathworksheets4kids.com

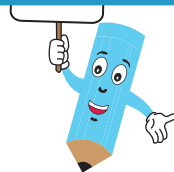
Proofreading Marks

- Capitalize it.
- Add a comma.
- period.
- strophe.
- on mark.
- spelling mistake.
- quotation marks.

Capitalization mistakes



Punctuation mistakes



Spelling mistakes

