

# Interrogative Pronouns

An **interrogative pronoun** refers to a pronoun that introduces a question.

(Who, which, whose, whom, and what are the five interrogative pronouns. "Whom" is rarely used these days.)

Example: \_\_\_\_\_ **Whose** \_\_\_\_\_ watch is this?

Complete each sentence with an interrogative pronoun.

1) \_\_\_\_\_ would you prefer: an apple or orange?

2) \_\_\_\_\_

3) \_\_\_\_\_

4) \_\_\_\_\_

5) \_\_\_\_\_

6) \_\_\_\_\_

7) \_\_\_\_\_

8) \_\_\_\_\_ are the toys for?

9) \_\_\_\_\_ is the best place for a holiday?

10) \_\_\_\_\_ is the tallest girl in the class?

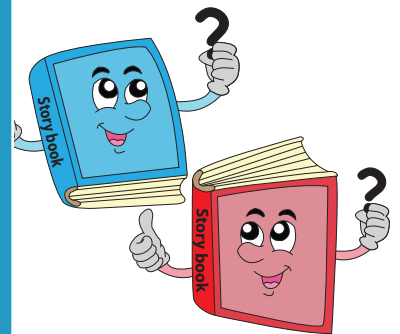
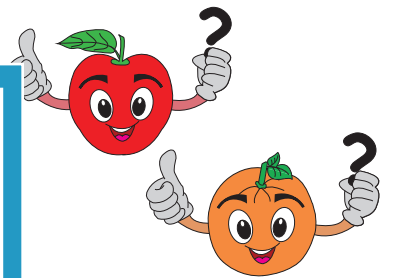
**PREVIEW**

Gain complete access to the largest collection of worksheets in all subjects!

Members, please log in to download this worksheet.

Not a member? Please sign up to gain complete access.

[www.mathworksheets4kids.com](http://www.mathworksheets4kids.com)



**Interrogative Pronouns**

An **interrogative pronoun** refers to a pronoun that introduces a question.

(Who, which, whose, whom, and what are the five interrogative pronouns. "Whom" is rarely used these days.)

Example: \_\_\_\_\_ **Whose** \_\_\_\_\_ watch is this?

Complete each sentence with an interrogative pronoun. (Answers may vary)

1) \_\_\_\_\_ **Which** \_\_\_\_\_ would you prefer: an apple or orange?

2) \_\_\_\_\_ **What** \_\_\_\_\_

3) \_\_\_\_\_ **Whom** \_\_\_\_\_

4) \_\_\_\_\_ **What** \_\_\_\_\_

5) \_\_\_\_\_ **Whose** \_\_\_\_\_

6) \_\_\_\_\_ **Who** \_\_\_\_\_

7) \_\_\_\_\_ **Whose** \_\_\_\_\_

8) \_\_\_\_\_ **Who** \_\_\_\_\_ are the toys for?

9) \_\_\_\_\_ **Which** \_\_\_\_\_ is the best place for a holiday?

10) \_\_\_\_\_ **Who** \_\_\_\_\_ is the tallest girl in the class?

# PREVIEW

Gain complete access to the largest  
collection of worksheets in all subjects!

Members, please  
log in to  
download this  
worksheet.

Not a member?  
Please sign up to  
gain complete  
access.

[www.mathworksheets4kids.com](http://www.mathworksheets4kids.com)

