

Name : \_\_\_\_\_

## Similes

**Simile** is a figure of speech that compares two different things using the words 'like' or 'as'.

Draw the noun in each of the similes.

1) as clear as a bell



2) as bright as the sun



3) as old as the h



Gain complete access to the largest collection of worksheets in all subjects!

Members, please log in to download this worksheet.

Not a member? Please sign up to gain complete access.

[www.mathworksheets4kids.com](http://www.mathworksheets4kids.com)

5) as fresh as a d



weather



## Similes

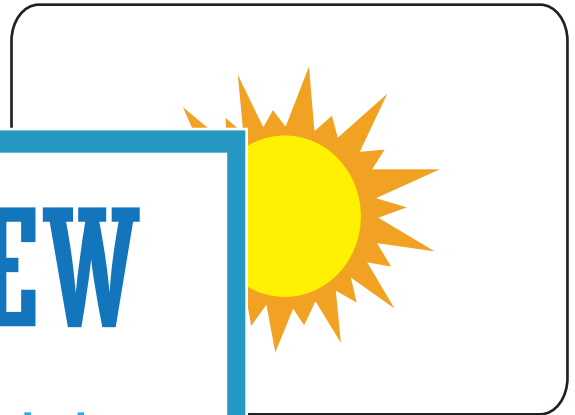
**Simile** is a figure of speech that compares two different things using the words 'like' or 'as'.

Draw the noun in each of the similes.

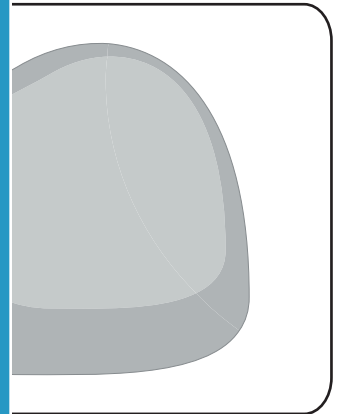
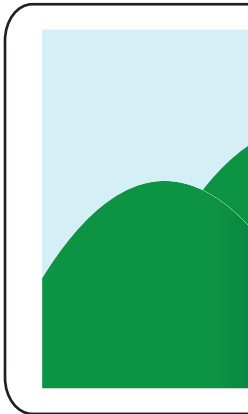
1) as clear as a bell



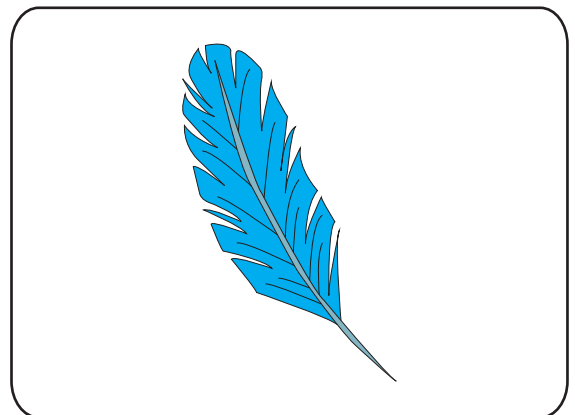
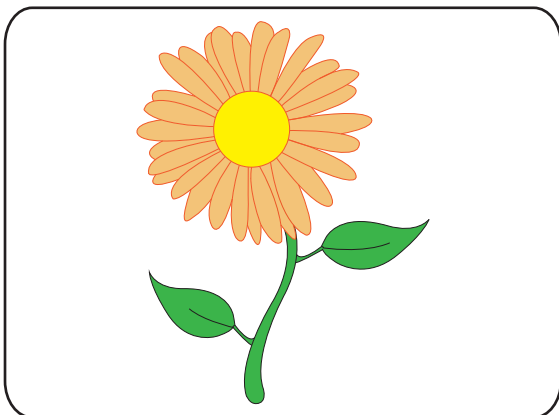
2) as bright as the sun



3) as old as the hock



5) as fresh as a d



**PREVIEW**

Gain complete access to the largest collection of worksheets in all subjects!

Members, please log in to download this worksheet.

Not a member? Please sign up to gain complete access.

[www.mathworksheets4kids.com](http://www.mathworksheets4kids.com)