

Multiplying Large Numbers

2-digit: S1

$$\begin{array}{r} 1) \quad 9,047,318 \\ \times \quad \quad \quad 57 \\ \hline \end{array}$$

$$\begin{array}{r} 2) \quad 416,240 \\ \times \quad \quad \quad 61 \\ \hline \end{array}$$

$$\begin{array}{r} 3) \quad 7,123,483 \\ \times \quad \quad \quad 12 \\ \hline \end{array}$$

$$\begin{array}{r} 4) \quad 815,700 \\ \times \quad \quad \quad 34 \\ \hline \end{array}$$

$$\begin{array}{r} \quad \quad \quad 376,197 \\ \times \quad \quad \quad 34 \\ \hline \end{array}$$

PREVIEW

Gain complete access to the largest collection of worksheets in all subjects!

Members, please log in to download this worksheet.

Not a member? Please sign up to gain complete access.

www.mathworksheets4kids.com

7) An auto manufacturer produces 235 vehicles are produced each day.

d. Each plant many

8) The value of a flax bushel is \$13. What is the value of 5,812,279 bushels of flax?



Answer key**Multiplying Large Numbers**

2-digit: S1

$$\begin{array}{r} 1) \quad 9,047,318 \\ \times \quad \quad 57 \\ \hline 515,697,126 \end{array}$$

$$\begin{array}{r} 2) \quad 416,240 \\ \times \quad \quad 61 \\ \hline 25,390,640 \end{array}$$

$$\begin{array}{r} 3) \quad 7,123,483 \\ \times \quad \quad 12 \\ \hline 85,481,796 \end{array}$$

$$\begin{array}{r} 4) \quad 815,700 \\ \times \quad \quad 96 \\ \hline 78,310,944 \end{array}$$

$$\begin{array}{r} \quad \quad 376,197 \\ \times \quad \quad 34 \\ \hline 12,790,698 \end{array}$$

PREVIEW

Gain complete access to the largest collection of worksheets in all subjects!

Members, please log in to download this worksheet.

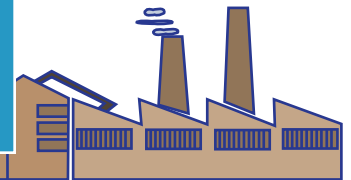
Not a member? Please sign up to gain complete access.

www.mathworksheets4kids.com

7) An auto manufacturer produces 235 vehicles are produced each day.

2,593

d. Each plant many



8) The value of a flax bushel is \$13. What is the value of 5,812,279 bushels of flax?

\$75,559,627

