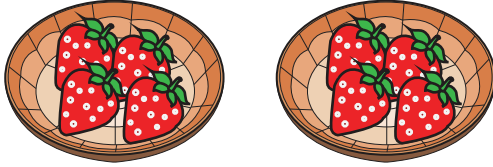


Describing Model: Equal Groups

Answer the questions that describe each model.

A)



1) How many baskets are there?

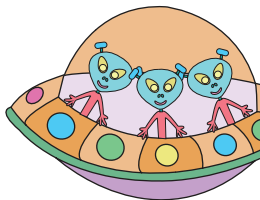
2) How many strawberries are there in each basket?

3) Write a multiplication sentence that describes the model.

_____ × _____ = _____

4) How many strawberries are there in all?

B)



1) How many spaceships are there?

_____ spaceships

2) How many aliens are there in each spaceship?

_____ aliens

3) Write a multiplication sentence that describes the model.

_____ × _____ = _____

4) How many aliens are there in all?

_____ aliens

PREVIEW

Gain complete access to the largest collection of worksheets in all subjects!

Members, please log in to download this worksheet.

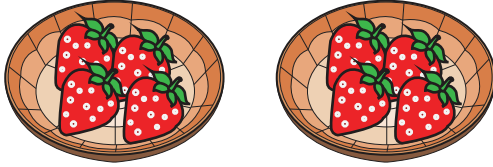
Not a member? Please sign up to gain complete access.

www.mathworksheets4kids.com

Describing Model: Equal Groups

Answer the questions that describe each model.

A)



1) How many baskets are there?

 2

2) How many strawberries are there in each basket?

 4

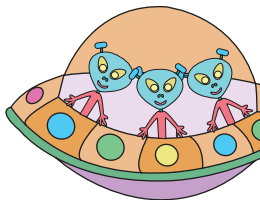
3) Write a multiplication sentence that describes the model.

 2 × 2

4) How many strawberries are there in all?

 8

B)



1) How many spaceships are there?

 3 spaceships

2) How many aliens are there in each spaceship?

 3 aliens

3) Write a multiplication sentence that describes the model.

 3 × 3 = 9

4) How many aliens are there in all?

 9 aliens

PREVIEW

Gain complete access to the largest
collection of worksheets in all subjects!

Members, please
log in to
download this
worksheet.

Not a member?
Please sign up to
gain complete
access.

www.mathworksheets4kids.com