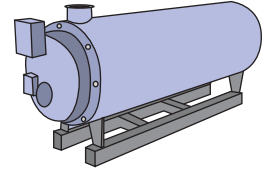


Name : _____

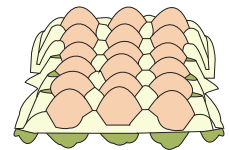
2-Digit Multiplication

Sheet 2

- 1) A two-ton boiler consumes 22 gallons of fuel a day. How many gallons of fuel will the boiler consume in 17 days?



- 2) If a large egg contains 70 calories of energy, how many calories of energy would 18 such eggs contain?

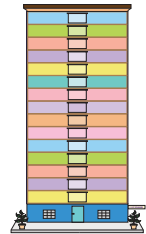


- 3) John lives on the first floor and there is a parking garage on the first floor. How many steps will he need to go up to the parking garage?

Gain complete access to the largest collection of worksheets in all subjects!

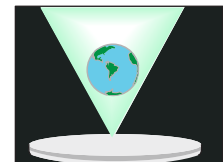
Members, please log in to download this worksheet.

Not a member? Please sign up to gain complete access.

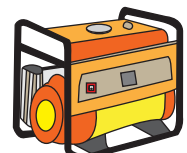


- 4) 12 different decorative punch holes are used to create a pattern. How many punch holes are used to create a pattern of 12 punch holes?

www.mathworksheets4kids.com

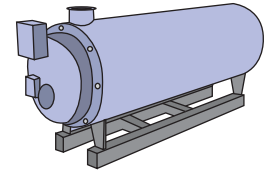


- 5) In the event of a blackout, a commercial building uses 16 portable generators to light up a single floor. How many generators will be required to light up 19 floors in the building?



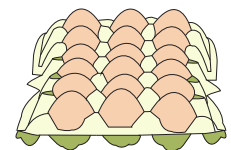
2-Digit Multiplication

- 1) A two-ton boiler consumes 22 gallons of fuel a day. How many gallons of fuel will the boiler consume in 17 days?



374 gallons

- 2) If a large egg contains 70 calories of energy, how many calories of energy would 18 such eggs contain?



1,260 calories

- 3) John lives on the first floor and there is a parking garage on the first floor. How many steps will he need to go up to the parking garage?

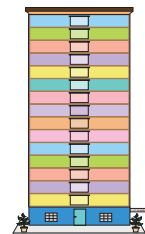
Gain complete access to the largest collection of worksheets in all subjects!

Members, please log in to download this worksheet.

Not a member? Please sign up to gain complete access.

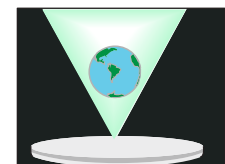
www.mathworksheets4kids.com

is on the first floor. How many steps



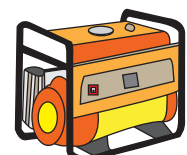
288 steps

- 4) 12 different decorative punch holes are used to create a pattern. How many punch holes are used to create a pattern of 32 rows?



384 punches

- 5) In the event of a blackout, a commercial building uses 16 portable generators to light up a single floor. How many generators will be required to light up 19 floors in the building?



304 generators