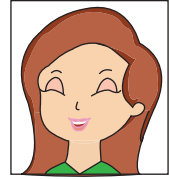


Name : _____

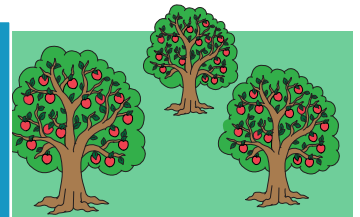
Multiplication

4-digit & 5-digit by 2-digit: S1

- 1) If on average a person blinks 28,800 times a day, how many times will they blink in 30 days?



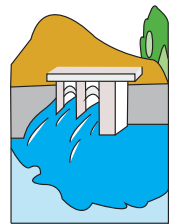
- 2) The area of an apple orchard measures 52 hectares. If there are 1,568 trees in one hectare, how many apple trees are in the orchard?



- 3) A weir, 10 inches high, allows 100 gallons of water to flow over it every

Gain complete access to the largest collection of worksheets in all subjects!

minute. How many



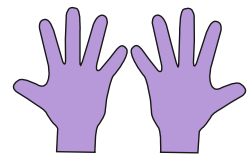
- 4) A manufacturing plant produces 100 gloves every hour. How many

Members, please log in to download this worksheet.

Not a member? Please sign up to gain complete access.

www.mathworksheets4kids.com

hour. How many



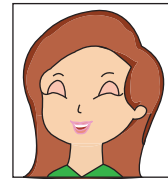
- 5) The average yield of wheat per acre is 56 bushels. If this quantity is equivalent to 3,360 pounds, how many pounds of wheat will 32 hectares of land produce on average?



Multiplication

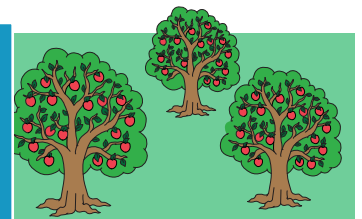
4-digit & 5-digit by 2-digit: S1

- 1) If on average a person blinks 28,800 times a day, how many times will they blink in 30 days?



864,000 times

- 2) The area of an apple orchard measures 52 hectares. If there are 1,568 trees in one hectare, how many apple trees are in the orchard?

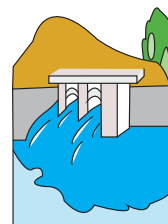


81,536 apple trees

- 3) A weir, 10 inches high, can hold back 1,332,000 gallons of water.

Gain complete access to the largest collection of worksheets in all subjects!

minute. How many



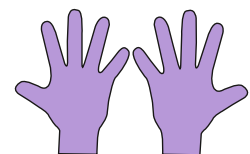
13,632 gallons

Members, please log in to download this worksheet.

Not a member? Please sign up to gain complete access.

- 4) A manufacturing plant can produce 800,000 gloves in 400 hours.

hour. How many



800,000 gloves

- 5) The average yield of wheat per acre is 56 bushels. If this quantity is equivalent to 3,360 pounds, how many pounds of wheat will 32 hectares of land produce on average?



107,520 pounds

www.mathworksheets4kids.com