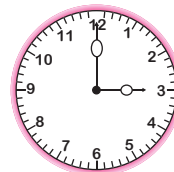


Name : \_\_\_\_\_

## Multiplication

4-digit & 5-digit by 2-digit: S3

- 1) One hour has 3,600 seconds. How many seconds make 24 hours?



\_\_\_\_\_

- 2) A web page on Google receives an average of 14,800 views per day. How many views will the web page receive on an average in 13 days?



\_\_\_\_\_

- 3) An electronics store sells 4k television sets in a day. If each set was sold for \$1,200, what is the total value of the sales?

Gain complete access to the largest collection of worksheets in all subjects!

Members, please log in to download this worksheet.

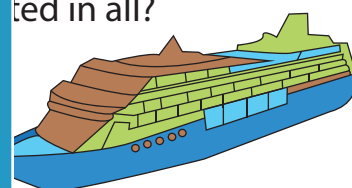
Not a member? Please sign up to gain complete access.



\_\_\_\_\_

- 4) The maximum load capacity of a cargo ship is 95 tons per trip. If the ship makes 32 trips, how much cargo can it carry in all?

[www.mathworksheets4kids.com](http://www.mathworksheets4kids.com)



\_\_\_\_\_

- 5) Nora takes an interest-free loan from her father to buy a car. If she pays her father \$1,528 per month over a 16-month period, what is the cost of the car?

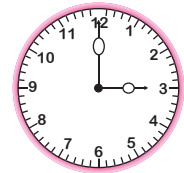


\_\_\_\_\_

**Multiplication**

4-digit &amp; 5-digit by 2-digit: S3

- 1) One hour has 3,600 seconds. How many seconds make 24 hours?



**86,400 seconds**

- 2) A web page on Google receives an average of 14,800 views per day. How many views will the web page receive on an average in 13 days?

Google

**192,400 v**

- 3) An electronics store sells 4,000 television sets in a day. If each set was sold for \$25,500, what were the sales?

Gain complete access to the largest collection of worksheets in all subjects!

4k television sets in a  
ue made from

**\$102,33**

Members, please  
log in to  
download this  
worksheet.

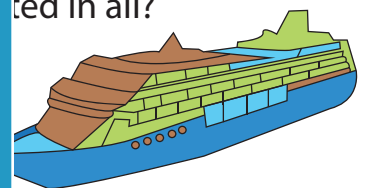
Not a member?  
Please sign up to  
gain complete  
access.



- 4) The maximum load capacity of a ship is 15,700 tons. How many tons of cargo can the ship make 32 trips?

95 tons per trip. If the  
ted in all?

[www.mathworksheets4kids.com](http://www.mathworksheets4kids.com)



**502,240 tons**

- 5) Nora takes an interest-free loan from her father to buy a car. If she pays her father \$1,528 per month over a 16-month period, what is the cost of the car?



**\$24,448**