

Name : \_\_\_\_\_

## Comparing Quantities

Sheet 4

Comparing using the symbols  $<$ ,  $>$  or  $=$ .

1) 91% of 41

57% of 95

2) 99% of 123

73% of 176

3) 40% of 36

36% of 40

4) 21% of 773

8% of 809

5) 84% of 119

56% of 297

7) 75% of 58

61% of 95

9) 19% of 347

98% of 315

# PREVIEW

Gain complete access to the largest  
collection of worksheets in all subjects!

Members, please  
log in to  
download this  
worksheet.

Not a member?  
Please sign up to  
gain complete  
access.

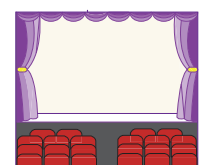
[www.mathworksheets4kids.com](http://www.mathworksheets4kids.com)

11) On an average it takes 90 minutes to hike from Crater Lake from down to Bells Lake. Ted took 100 minutes to reach Maroon Lake. Who clocked a less time?

\_\_\_\_\_



12) A school organized a music concert in a huge auditorium. Forty percent of the 280 corner seats were reserved for teachers and 60% of 310 center seats were reserved for students. Identify the group that occupied more seats in the auditorium.



**Answer key****Comparing Quantities**

Sheet 4

Comparing using the symbols  $<$ ,  $>$  or  $=$ .

1) 91% of 41  57% of 95

2) 99% of 123  73% of 176

3) 40% of 36  36% of 40

4) 21% of 773  8% of 809

5) 84% of 119

56% of 297

7) 75% of 58

61% of 95

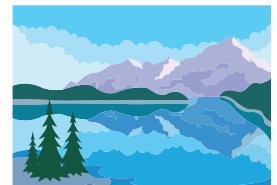
9) 19% of 347

98% of 315

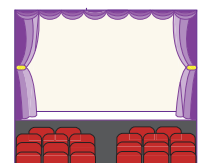
**PREVIEW**Gain complete access to the largest  
collection of worksheets in all subjects!Members, please  
log in to  
download this  
worksheet.Not a member?  
Please sign up to  
gain complete  
access.[www.mathworksheets4kids.com](http://www.mathworksheets4kids.com)

- 11) On an average it takes 90 minutes to hike from Bells Lake to Maroon Bells Lake. Ted took 54 minutes to reach Maroon Bells Lake. Who clocked a less time to reach Maroon Bells Lake?

90 minutes to hike from Bells Lake to Maroon Bells Lake. Ted took 54 minutes to reach Maroon Bells Lake. Who clocked a less time to reach Maroon Bells Lake?

**Mo's hike: 54 minutes**

- 12) A school organized a music concert in a huge auditorium. Forty percent of the 280 corner seats were reserved for teachers and 60% of 310 center seats were reserved for students. Identify the group that occupied more seats in the auditorium.

**Teachers: 112 seats; Students: 186 seats; Students occupied more seats**