

Name : \_\_\_\_\_

# Percent Change

Customary Units: S4

Find the new amount.

1) An increase of 2% in 9,987 pt.

\_\_\_\_\_

2) An increase of 16% in 583 in.

\_\_\_\_\_

3) A decrease of 57% in 7,469 tsp.

\_\_\_\_\_

4) An increase of 84% in 101 cups.

\_\_\_\_\_

5) An increase of 20%

\_\_\_\_\_

of 9% in 3,278 gal.

\_\_\_\_\_

7) A decrease of 93%

\_\_\_\_\_

of 61% in 8,682 fl.oz.

\_\_\_\_\_

9) An increase of 38%

\_\_\_\_\_

of 55% in 217 yd.

\_\_\_\_\_

11) Tom plans to carpet  
960 square feet. He  
reduced the area  
installed with carpet

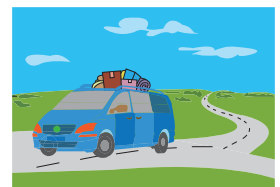
\_\_\_\_\_

the total floor area measured  
the guest bedroom, which  
the total area was



12) Mo and Ben went on a road trip and covered a total of 3,564 miles. Their return route measured 21% less than the distance covered on their onward route. How many miles did they drive on their return home?

\_\_\_\_\_



**PREVIEW**  
Gain complete access to the largest  
collection of worksheets in all subjects!

Members, please  
log in to  
download this  
worksheet.

Not a member?  
Please sign up to  
gain complete  
access.

[www.mathworksheets4kids.com](http://www.mathworksheets4kids.com)