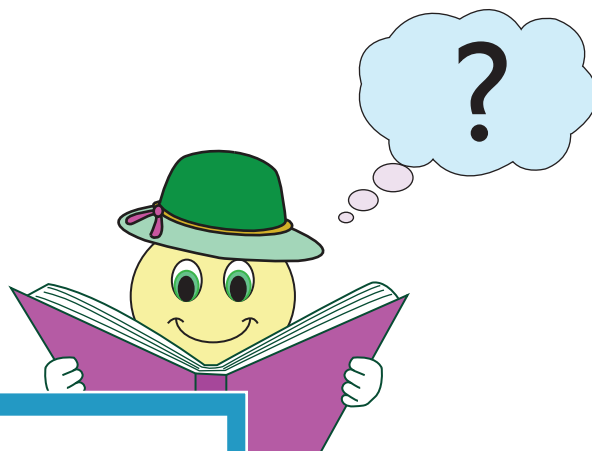


# Who Am I ?

- 1) I am a quadrilateral, my opposite sides are equal, but my adjacent angles are not congruent.

Who am I?



## PREVIEW

Gain complete access to the largest collection of worksheets in all subjects!

Members, please log in to download this worksheet.

Not a member? Please sign up to gain complete access.

[www.mathworksheets4kids.com](http://www.mathworksheets4kids.com)

- 2) I am a quadrilateral with no congruent and no sides. I have a pair of parallel sides. Who am I?

lateral with no sides. I have a pair of parallel sides. Who am I?

- 4) I am a quadrilateral with four right angles. My diagonals are perpendicular. Who am I?

lateral, my diagonals are congruent, but are not perpendicular bisectors. Who am I?

# Who Am I ?

- 1) I am a quadrilateral, my opposite sides are equal, but my adjacent angles are not congruent.

Who am I?



**Parallelogram**

## PREVIEW

Gain complete access to the largest collection of worksheets in all subjects!

Members, please log in to download this worksheet.

Not a member? Please sign up to gain complete access.

[www.mathworksheets4kids.com](http://www.mathworksheets4kids.com)

- 2) I am a quadrilateral with no congruent and no sides. I have a pair of opposite sides that are parallel, but the other two are not. Who am I?

**Rhombus**

lateral with no sides. I have a pair of opposite sides that are parallel, but the other two are not. Who am I?

**Trapezoid**

- 4) I am a quadrilateral with four right angles. My diagonals are congruent and perpendicular. Who am I?

**Square**

lateral, my diagonals are congruent, but are not perpendicular bisectors. Who am I?

**Rectangle**