

Who Am I ?

- 1) I am a quadrilateral with exactly one pair of parallel sides. My non-parallel sides are congruent.

Who am I?



PREVIEW

Gain complete access to the largest collection of worksheets in all subjects!

Members, please log in to download this worksheet.

Not a member? Please sign up to gain complete access.

www.mathworksheets4kids.com

- 2) I am a quadrilateral with two pairs of parallel sides. My opposite sides are congruent. My diagonals are not perpendicular.

lateral. I have all congruent sides, but my diagonals are not equal.

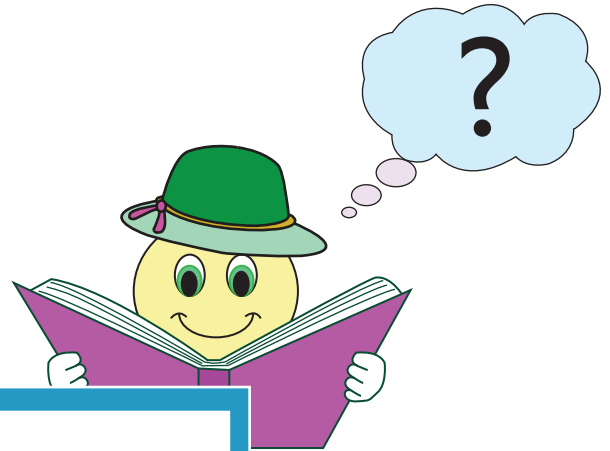
- 4) I am a quadrilateral with two pairs of parallel sides. My diagonals are non-congruent. My opposite sides are parallel and congruent. Who am I?

lateral, my disjoint diagonals are perpendicular. My pairs of adjacent sides are congruent. My diagonals are perpendicular. Who am I?

Who Am I ?

- 1) I am a quadrilateral with exactly one pair of parallel sides. My non-parallel sides are congruent.

Who am I?



Isosceles T

PREVIEW

Gain complete access to the largest collection of worksheets in all subjects!

Members, please log in to download this worksheet.

Not a member? Please sign up to gain complete access.

www.mathworksheets4kids.com

- 2) I am a quadrilateral with two pairs of parallel sides. My opposite sides are congruent. My diagonals are not perpendicular.

Rectangle

lateral. I have all congruent sides, but my diagonals are not equal.

Rhombus

- 4) I am a quadrilateral with two pairs of parallel sides. My diagonals are non-congruent. My opposite sides are parallel and congruent. Who am I?

Parallelogram

lateral, my disjoint diagonals are perpendicular. My pairs of adjacent sides are congruent. My diagonals are perpendicular. Who am I?

Kite