

Name : \_\_\_\_\_

## Ratio: Part to Whole

Level 1: S1

1)



ratio of chairs to furniture

\_\_\_\_\_

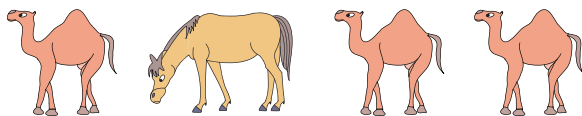
2)



ratio of pumpkins to vegetables

\_\_\_\_\_

3)



ratio of animals to camels

\_\_\_\_\_

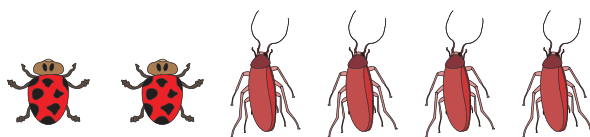
4)



ratio of tools to knives

\_\_\_\_\_

5)



ratio of ladybugs to insects

\_\_\_\_\_

Name : \_\_\_\_\_

## Answer Key

### Ratio: Part to Whole

Level 1: S1

1)



ratio of chairs to furniture

3 : 5

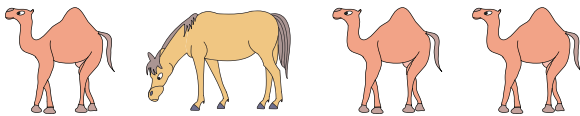
2)



ratio of pumpkins to vegetables

2 : 7

3)



ratio of animals to camels

4 : 3

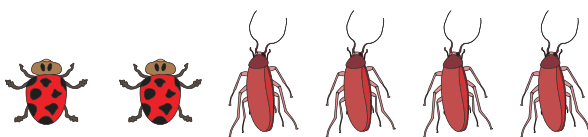
4)



ratio of tools to knives

5 : 4

5)



ratio of ladybugs to insects

2 : 6 or 1 : 3