

Name : _____

Reduce the Ratio

MS3

A) Reduce each ratio to its lowest term.

1) $76 : 92 =$

2) $58 : 34 =$

3) $30 : 90 =$

4) $88 : 66 =$

5) $46 : 52 =$

PREVIEW

Gain complete access to the largest collection of worksheets in all subjects!

Members, please log in to download this worksheet.

Not a member? Please sign up to gain complete access.

www.mathworksheets4kids.com

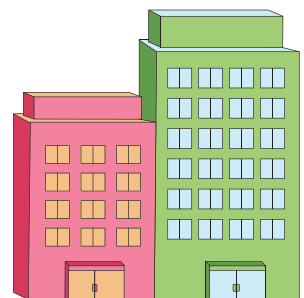
B) Write each ratio in its simplest form.

1) $35 \text{ yd} : 84 \text{ yd} =$ _____

3) $48 \text{ lb} : 72 \text{ lb} =$ _____

5) $63 \text{ tsp} : 18 \text{ tsp} =$ _____

C) The height of two adjacent residential buildings are 54 feet and 81 feet. What is the ratio of the height of the smaller building to the height of the taller building? Write the ratio in its simplest form.



Name : _____

Answer Key

Reduce the Ratio

MS3

A) Reduce each ratio to its lowest term.

1) $76 : 92 = \boxed{19 : 23}$

2) $58 : 34 = \boxed{29 : 17}$

3) $30 : 90 = \boxed{1 : 3}$

4) $88 : 66 = \boxed{4 : 3}$

5) $46 : 52 =$

$\boxed{3 : 5}$

B) Write each ratio in its simplest form.

1) $35 \text{ yd} : 84 \text{ yd}$

Gain complete access to the largest collection of worksheets in all subjects!

$= \underline{5 \text{ yd} : 12 \text{ yd}}$

3) $48 \text{ lb} : 72 \text{ lb}$

Members, please log in to download this worksheet.

Not a member? Please sign up to gain complete access.

$= \underline{2 \text{ in} : 1 \text{ in}}$

5) $63 \text{ tsp} : 18 \text{ tsp}$

www.mathworksheets4kids.com

$= \underline{6 \text{ qt} : 11 \text{ qt}}$

C) The height of two adjacent residential buildings are 54 feet and 81 feet. What is the ratio of the height of the smaller building to the height of the taller building? Write the ratio in its simplest form.

$\underline{54 \text{ ft} : 81 \text{ ft} = 2 \text{ ft} : 3 \text{ ft}}$

