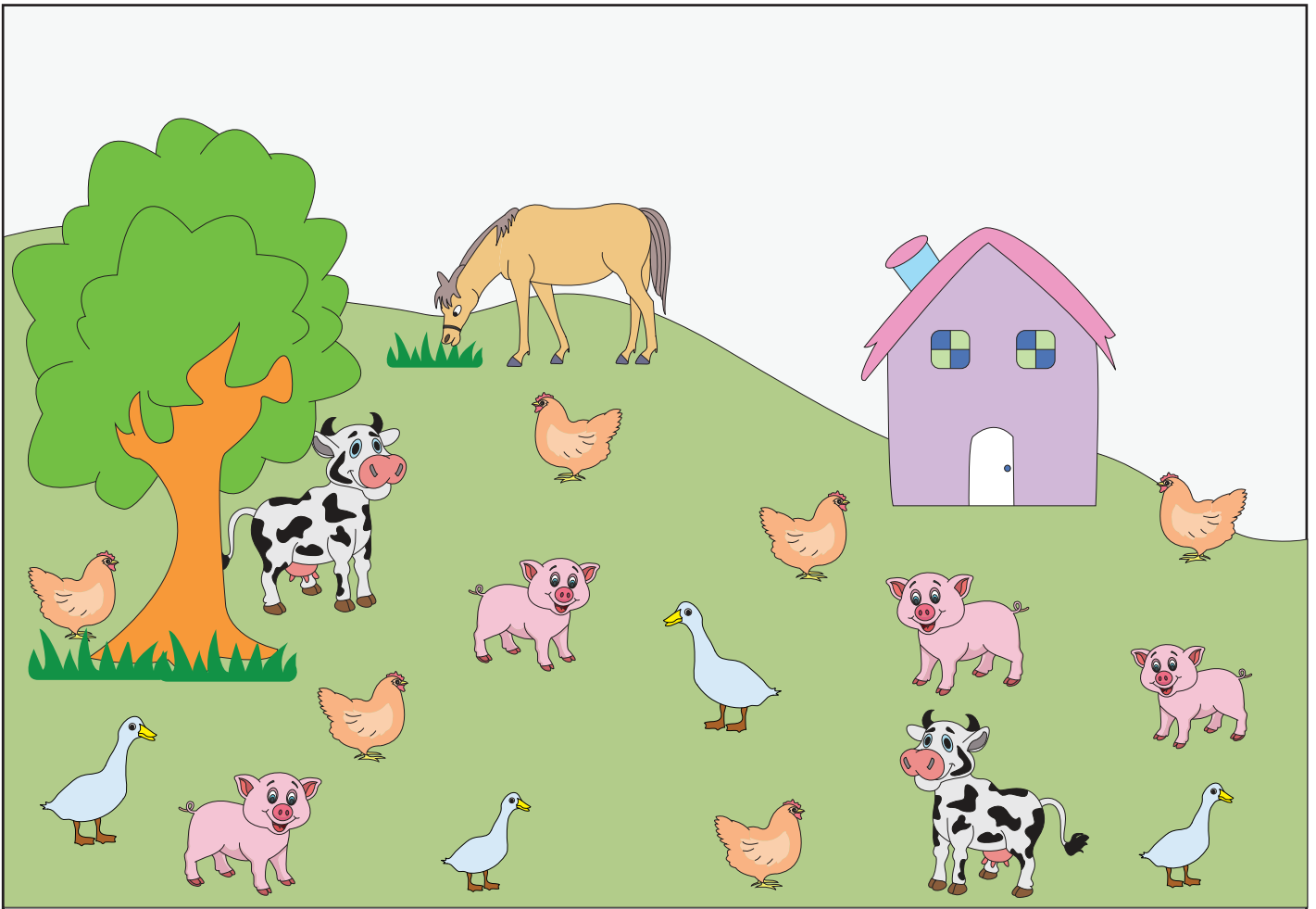


Ratio - Farm Animals

- 1) What is the ratio of horses to cows?

- 2) Find the ratio of pigs to hens.

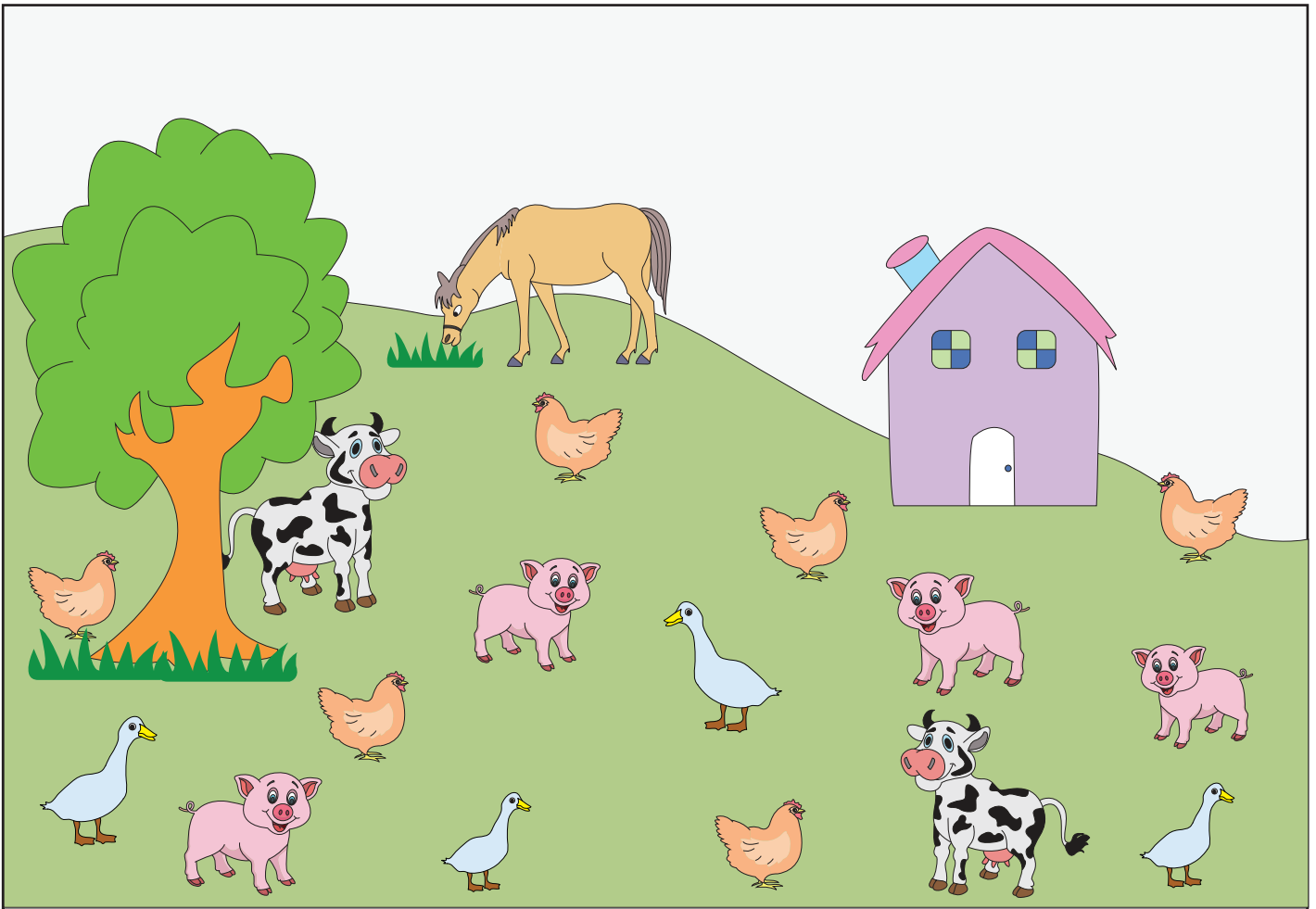
- 3) Is the ratio of pigs to ducks and the ratio of horses to cows an equivalent one?

- 4) What is the ratio of animals to birds?

- 5) What would be the ratio of cows to hens, if six more cows came into the picture?

Answer key**Ratio - Farm Animals**

Sheet 1



1) What is the ratio of horses to cows?

1 : 2

2) Find the ratio of pigs to hens.

4 : 6 or 2 : 3

3) Is the ratio of pigs to ducks and the ratio of horses to cows an equivalent one?

No, as $1 : 1 \neq 1 : 2$

4) What is the ratio of animals to birds?

7 : 10

5) What would be the ratio of cows to hens, if six more cows came into the picture?

8 : 6 or 4 : 3