

Name : \_\_\_\_\_

## Rounding: Nearest Thousand

Sheet 1

Round each number to the nearest thousand.

1) 27,463 \_\_\_\_\_

2) 9,278 \_\_\_\_\_

3) 9,680 \_\_\_\_\_

4) 63,513 \_\_\_\_\_

5) 33,235 \_\_\_\_\_

7) 1,579 \_\_\_\_\_

9) 71,368 \_\_\_\_\_

11) 5,047 \_\_\_\_\_

13) 10,025 adm  
number to t  
\_\_\_\_\_

14) A botanical garden club has 7,619 members. Round the number to the nearest thousand.  
\_\_\_\_\_

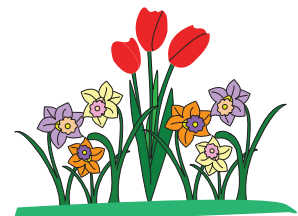
**PREVIEW**

Gain complete access to the largest collection of worksheets in all subjects!

Members, please log in to download this worksheet.

Not a member? Please sign up to gain complete access.

[www.mathworksheets4kids.com](http://www.mathworksheets4kids.com)



**Rounding: Nearest Thousand**

Round each number to the nearest thousand.

1) 27,463 27,000

2) 9,278 9,000

3) 9,680 10,000

4) 63,513 64,000

5) 33,235 33,000

6) 8,104 8,000

7) 1,579 2,000

8) 56,000 56,000

9) 71,368 71,000

10) 3,000 3,000

11) 5,047 5,000

12) 49,000 49,000

13) 10,025 admitted  
number to the  
10,000

I. Round the

14) A botanical garden club has 7,619 members. Round the number to the nearest thousand.  
8,000

**PREVIEW**

Gain complete access to the largest  
collection of worksheets in all subjects!

Members, please  
log in to  
download this  
worksheet.

Not a member?  
Please sign up to  
gain complete  
access.

[www.mathworksheets4kids.com](http://www.mathworksheets4kids.com)

