

Name : \_\_\_\_\_

Score : \_\_\_\_\_

## 3-Digit Subtraction

No regrouping: T2S1

$$\begin{array}{r} 1) \quad 549 \\ - 321 \\ \hline \end{array}$$

$$\begin{array}{r} 2) \quad 178 \\ - 103 \\ \hline \end{array}$$

$$\begin{array}{r} 3) \quad 823 \\ - 510 \\ \hline \end{array}$$

$$\begin{array}{r} 4) \quad 397 \\ - 232 \\ \hline \end{array}$$

$$\begin{array}{r} 5) \quad 753 \\ - 633 \\ \hline \end{array}$$

$$6) \quad 969$$

$$7) \quad 587$$

$$\begin{array}{r} 8) \quad 872 \\ - 720 \\ \hline \end{array}$$

$$\begin{array}{r} 9) \quad 475 \\ - 262 \\ \hline \end{array}$$

$$\begin{array}{r} 12) \quad 256 \\ - 113 \\ \hline \end{array}$$

**PREVIEW**

Gain complete access to the largest collection of worksheets in all subjects!

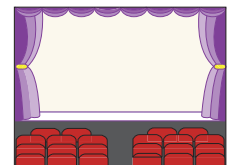
Members, please log in to download this worksheet.

Not a member? Please sign up to gain complete access.

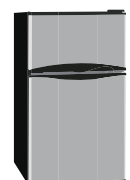
[www.mathworksheets4kids.com](http://www.mathworksheets4kids.com)

13) A movie theater has 140 reservations open for 140 seats. If 140 reservations are open for \_\_\_\_\_ many seats

\_\_\_\_\_ many seats



14) The highest priced model in the compact refrigerator range is \$379. Find the difference in price, if the lowest priced model costs \$209.



**Answer key****3-Digit Subtraction**

No regrouping: T2S1

$$\begin{array}{r} 1) \quad 549 \\ - 321 \\ \hline \mathbf{228} \end{array}$$

$$\begin{array}{r} 2) \quad 178 \\ - 103 \\ \hline \mathbf{75} \end{array}$$

$$\begin{array}{r} 3) \quad 823 \\ - 510 \\ \hline \mathbf{313} \end{array}$$

$$\begin{array}{r} 4) \quad 397 \\ - 232 \\ \hline \mathbf{165} \end{array}$$

$$\begin{array}{r} 5) \quad 753 \\ - 633 \\ \hline \mathbf{120} \end{array}$$

$$6) \quad 969$$

$$7) \quad 587$$

$$\begin{array}{r} 8) \quad 872 \\ - 720 \\ \hline \mathbf{152} \end{array}$$

$$\begin{array}{r} 9) \quad 475 \\ - 262 \\ \hline \mathbf{213} \end{array}$$

**PREVIEW**

Gain complete access to the largest collection of worksheets in all subjects!

Members, please log in to download this worksheet.

Not a member? Please sign up to gain complete access.

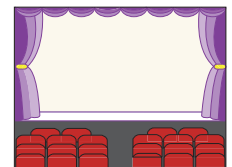
[www.mathworksheets4kids.com](http://www.mathworksheets4kids.com)

$$\begin{array}{r} 12) \quad 256 \\ - 113 \\ \hline \mathbf{143} \end{array}$$

- 13) A movie theater has 200 seats. If 80 reservations are open for the show, how many seats are left?

**120 seats**

- 14) A compact refrigerator costs \$379. Find the difference in price, if the lowest priced model costs \$209.



- 14) The highest priced model in the compact refrigerator range is \$379. Find the difference in price, if the lowest priced model costs \$209.

**A difference of \$170**

