

Subtraction

T2S3

$$\begin{array}{r} 1) \quad 5,283 \\ - \quad 341 \\ \hline \end{array}$$

$$\begin{array}{r} 2) \quad 1,839 \\ - \quad \quad 75 \\ \hline \end{array}$$

$$\begin{array}{r} 3) \quad 4,726 \\ - \quad 108 \\ \hline \end{array}$$

$$\begin{array}{r} 4) \quad 2,580 \\ - \quad 963 \\ \hline \end{array}$$

$$\begin{array}{r} 5) \quad 7,958 \\ - \quad 830 \\ \hline \end{array}$$

$$6) \quad 9,452$$

$$7) \quad 6,584$$

$$\begin{array}{r} 8) \quad 8,196 \\ - \quad 758 \\ \hline \end{array}$$

$$\begin{array}{r} 9) \quad 3,234 \\ - \quad 457 \\ \hline \end{array}$$

$$\begin{array}{r} 12) \quad 9,385 \\ - \quad \quad 32 \\ \hline \end{array}$$

PREVIEW

Gain complete access to the largest collection of worksheets in all subjects!

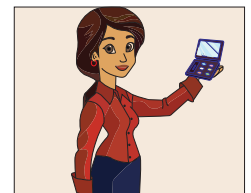
Members, please log in to download this worksheet.

Not a member? Please sign up to gain complete access.

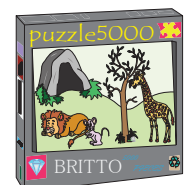
www.mathworksheets4kids.com

- 13) Ann working month. Calculate commission

earns \$2,200 per cludes a



- 14) Ray bought a 5,000 piece puzzle. After a fortnight, 73 pieces still remain to be fixed to complete the puzzle. How many pieces has Ray fixed so far?



Answer key**Subtraction**

T2S3

$$\begin{array}{r} 1) \quad 5,283 \\ - \quad 341 \\ \hline \quad \quad \quad \mathbf{4,942} \end{array}$$

$$\begin{array}{r} 2) \quad 1,839 \\ - \quad \quad 75 \\ \hline \quad \quad \quad \mathbf{1,764} \end{array}$$

$$\begin{array}{r} 3) \quad 4,726 \\ - \quad 108 \\ \hline \quad \quad \quad \mathbf{4,618} \end{array}$$

$$\begin{array}{r} 4) \quad 2,580 \\ - \quad 963 \\ \hline \quad \quad \quad \mathbf{1,617} \end{array}$$

$$\begin{array}{r} 5) \quad 7,958 \\ - \quad 830 \\ \hline \quad \quad \quad \mathbf{7,128} \end{array}$$

$$6) \quad 9,452$$

$$7) \quad 6,584$$

$$\begin{array}{r} 8) \quad 8,196 \\ - \quad 758 \\ \hline \quad \quad \quad \mathbf{7,438} \end{array}$$

$$\begin{array}{r} 9) \quad 3,234 \\ - \quad 457 \\ \hline \quad \quad \quad \mathbf{2,777} \end{array}$$

$$\begin{array}{r} 12) \quad 9,385 \\ - \quad \quad 32 \\ \hline \quad \quad \quad \mathbf{9,353} \end{array}$$

PREVIEW

Gain complete access to the largest
collection of worksheets in all subjects!

Members, please
log in to
download this
worksheet.

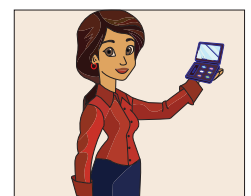
Not a member?
Please sign up to
gain complete
access.

www.mathworksheets4kids.com

- 13) Ann working month. Calculate her commission

earns \$2,200 per month. Calculate her commission. Includes a

\$2,002 is her base salary



- 14) Ray bought a 5,000 piece puzzle. After a fortnight, 73 pieces still remain to be fixed to complete the puzzle. How many pieces has Ray fixed so far?

Ray has fixed 4,927 pieces

