

Name : _____

3-Digit Subtraction

Sheet 2

- 1) Jack weighed 223 pounds. He attended a fitness training programme for a couple of months. If he weighed 216 pounds at the end of the program, how many pounds did Jack lose in 2 months?



- 2) For each batch, a bottling company fills beverages into 980 cans and bottles for distribution. If 498 cans have been filled per batch, how many bottles are to be filled?



- 3) Jim and Lilian invited 120 guests to their wedding, how many guests came for the wedding?

Gain complete access to the largest collection of worksheets in all subjects!

Members, please log in to download this worksheet.

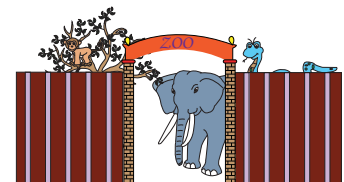
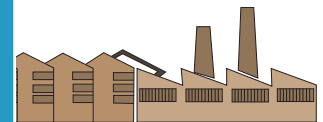
Not a member? Please sign up to gain complete access.

- 4) A textile factory employs 1000 workers. 433 workers are in the factory, how many workers are on leave for the factory?



- 5) There are 340 animals in a zoo. Of these, 112 are kept at enclosures and the rest move freely in the park. How many animals wander around the park?

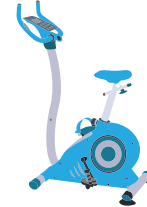
- 5) There are 340 animals in a zoo. Of these, 112 are kept at enclosures and the rest move freely in the park. How many animals wander around the park?



3-Digit Subtraction

- 1) Jack weighed 223 pounds. He attended a fitness training programme for a couple of months. If he weighed 216 pounds at the end of the program, how many pounds did Jack lose in 2 months?

7 pounds



- 2) For each batch, a bottling company fills beverages into 980 cans and bottles for distribution. If 498 cans have been filled per batch, how many bottles are to be filled?

482 bottles



- 3) Jim and Lilian invited 100 guests to their wedding, how many guests came for the wedding?

47 guests

PREVIEW
Gain complete access to the largest collection of worksheets in all subjects!

Members, please log in to download this worksheet.

Not a member? Please sign up to gain complete access.

www.mathworksheets4kids.com

- 4) A textile factory employed 1000 workers in the factory, 567 workers are skilled workers, how many unskilled workers are there for the factory?



- 5) There are 340 animals in a zoo. Of these, 112 are kept at enclosures and the rest move freely in the park. How many animals wander around the park?

228 animals

