

Name : _____

Converting from 12-Hour to 24-Hour Clocks

A) Convert each time from 12-hour to 24-hour clock.

1) 7:12 a.m. = _____

2) 10:05 p.m. = _____

3) 2:43 p.m. = _____

4) 5:31 a.m. = _____

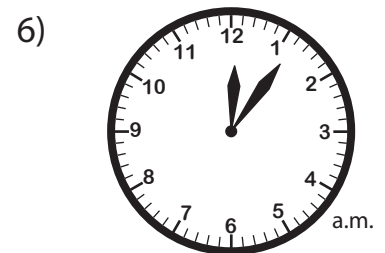
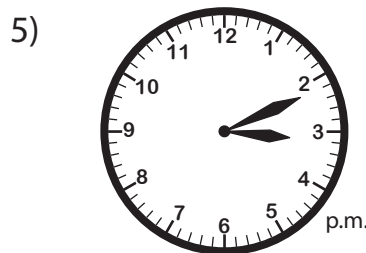
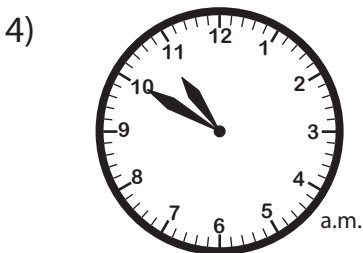
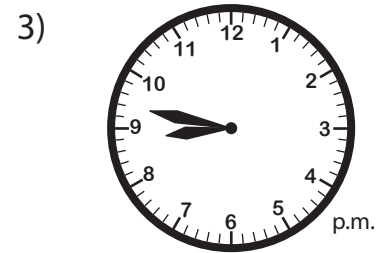
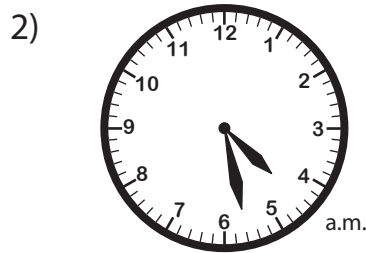
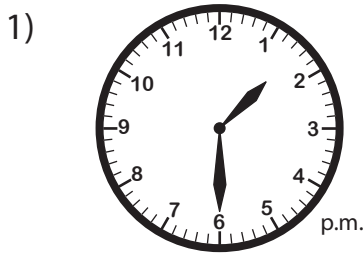
5) 9:24 a.m. = _____

6) 11:56 p.m. = _____

7) 6:39 p.m. = _____

8) 3:00 a.m. = _____

B) Read each analog clock, and write the time in 24-hour format.



C) The flight to Dallas will depart at 03:45 pm. Express this time in a 24-hour clock format.

Converting from 12-Hour to 24-Hour Clocks

A) Convert each time from 12-hour to 24-hour clock.

1) 7:12 a.m. = 07:12

2) 10:05 p.m. = 22:05

3) 2:43 p.m. = 14:43

4) 5:31 a.m. = 05:31

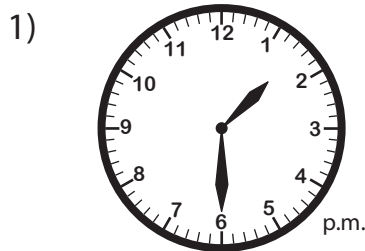
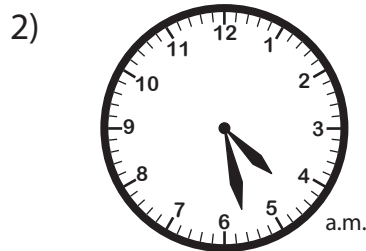
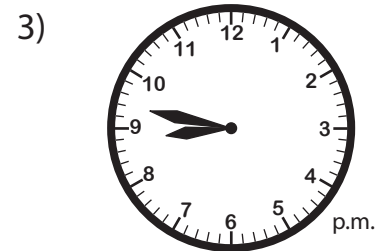
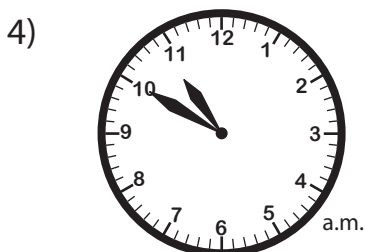
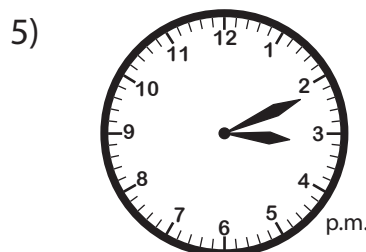
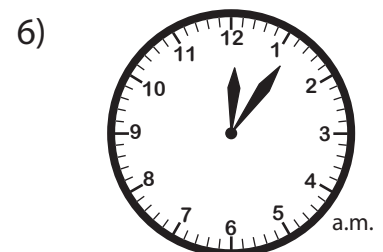
5) 9:24 a.m. = 09:24

6) 11:56 p.m. = 23:56

7) 6:39 p.m. = 18:39

8) 3:00 a.m. = 03:00

B) Read each analog clock, and write the time in 24-hour format.

**13:30****04:28****20:47****10:50****15:11****00:06**

C) The flight to Dallas will depart at 03:45 pm. Express this time in a 24-hour clock format.

15:45