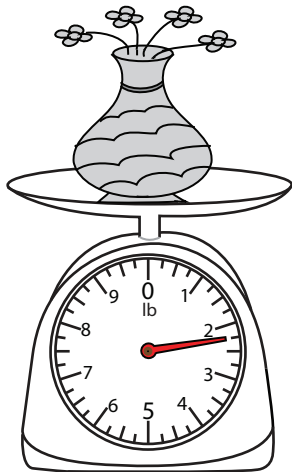


Measuring Weight - Customary Units

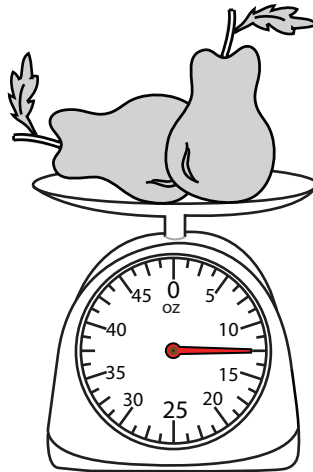
DS1

Measure the weight of each object.

1)

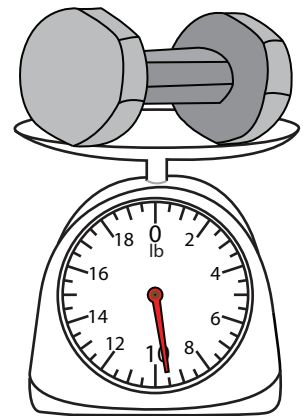


2)



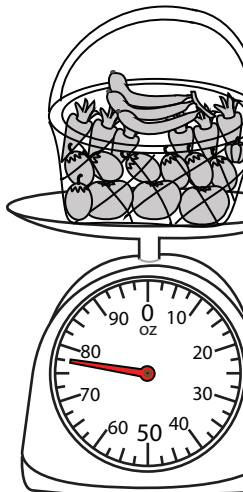
_____ lb

3)



_____ lb

4)



_____ oz

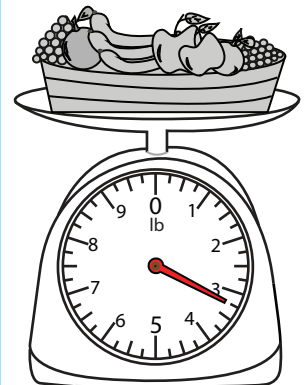
PREVIEW

Access the largest collection of worksheets for just **\$19.95** per year!

Members, please log in to download this worksheet.

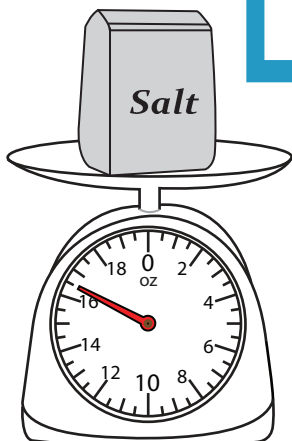
Not a member? Please sign up to gain complete access.

www.mathworksheets4kids.com

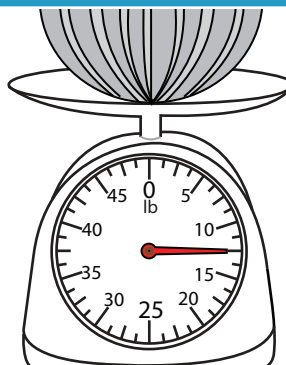


_____ lb

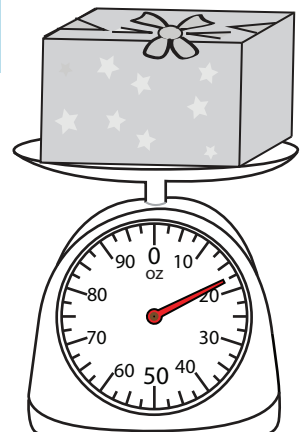
7)



_____ oz



_____ lb



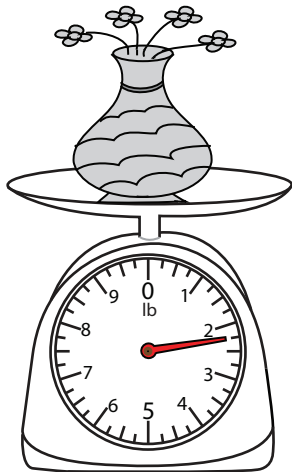
_____ oz

Measuring Weight - Customary Units

DS1

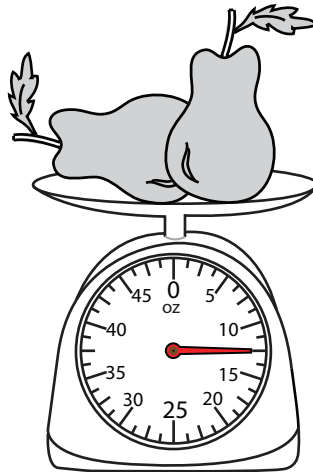
Measure the weight of each object.

1)



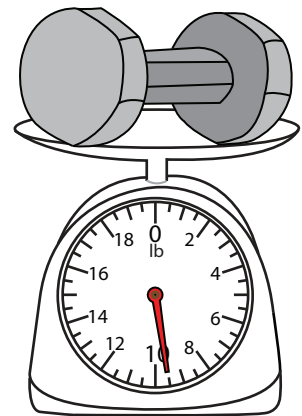
$2\frac{1}{2}$

2)



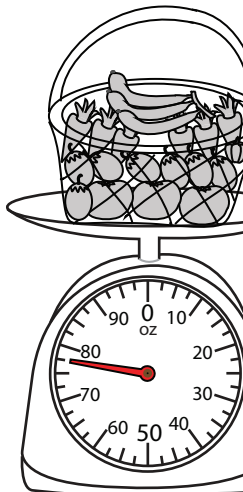
$12\frac{1}{2}$ lb

3)



$9\frac{1}{2}$ lb

4)



$77\frac{1}{2}$ oz

PREVIEW

Access the largest collection of worksheets for just **\$19.95** per year!

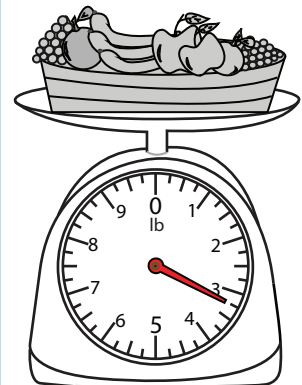
Members, please log in to download this worksheet.

Log in

Not a member? Please sign up to gain complete access.

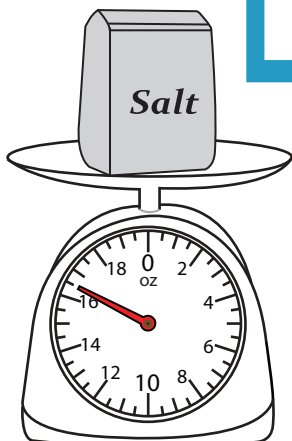
Sign up

www.mathworksheets4kids.com

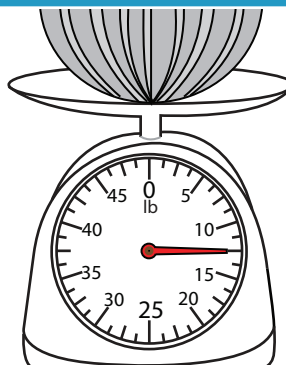


$3\frac{1}{4}$ lb

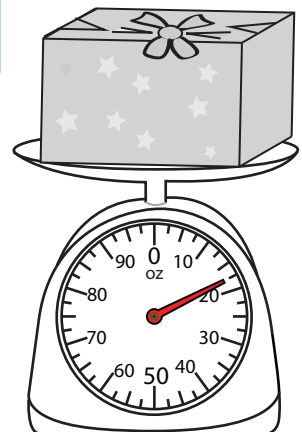
7)



$16\frac{1}{2}$ oz



$12\frac{1}{2}$ lb



$17\frac{1}{2}$ oz