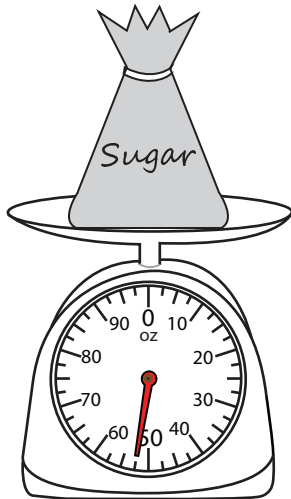


**Measuring Weight - Customary Units**

DS2

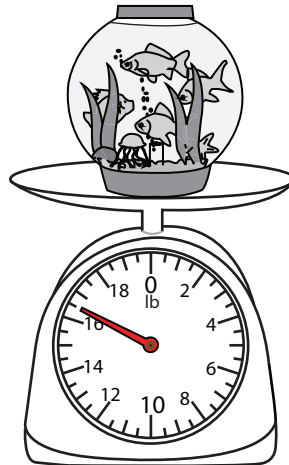
Measure the weight of each object.

1)



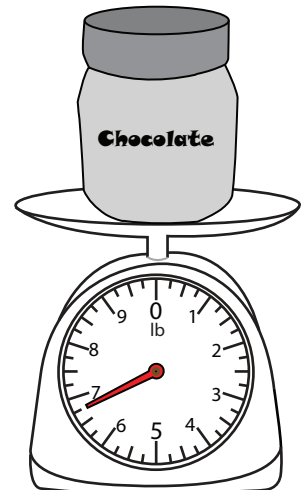
\_\_\_\_\_

2)



\_\_\_\_\_ lb

3)



\_\_\_\_\_ lb

4)



\_\_\_\_\_ oz

Access the largest collection of worksheets for just **\$19.95** per year!

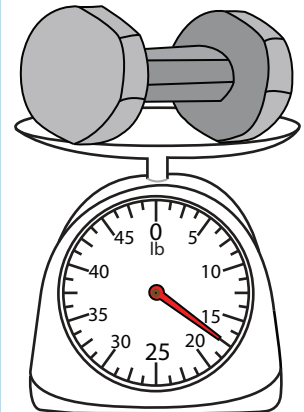
Members, please log in to download this worksheet.

**Log in**

Not a member? Please sign up to gain complete access.

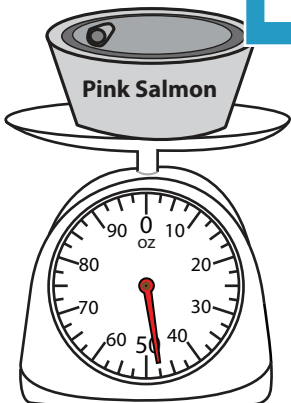
**Sign up**

[www.mathworksheets4kids.com](http://www.mathworksheets4kids.com)

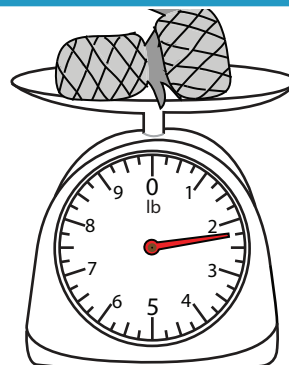


\_\_\_\_\_ lb

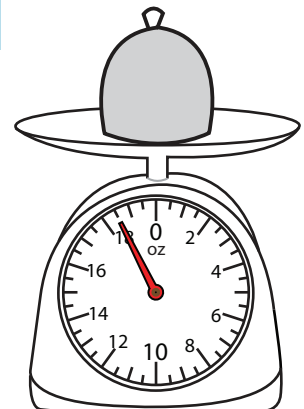
7)



\_\_\_\_\_ oz



\_\_\_\_\_ lb



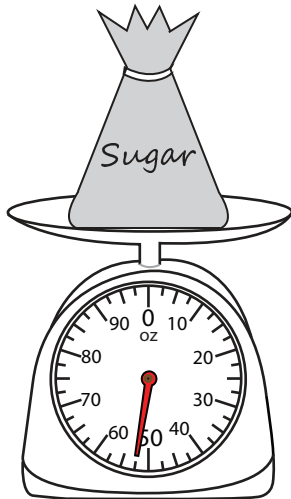
\_\_\_\_\_ oz

**Measuring Weight - Customary Units**

DS2

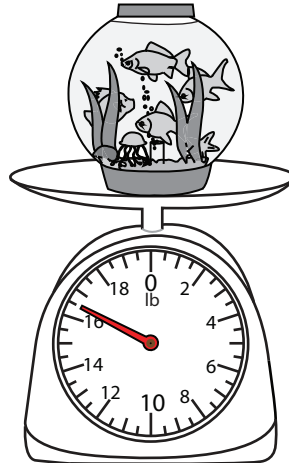
Measure the weight of each object.

1)



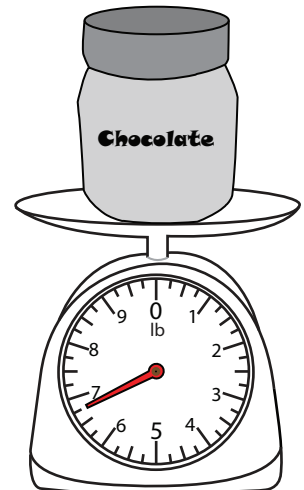
**52  $\frac{1}{2}$**

2)



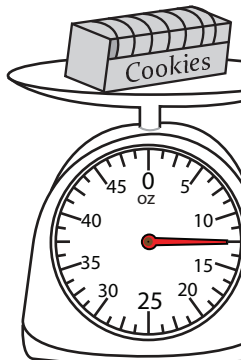
**6  $\frac{3}{4}$**  lb

3)



**17  $\frac{1}{2}$**  lb

4)



**12  $\frac{1}{2}$**  oz

Access the largest collection of worksheets for just **\$19.95** per year!

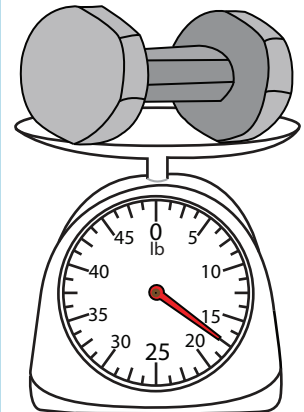
Members, please log in to download this worksheet.

**Log in**

Not a member? Please sign up to gain complete access.

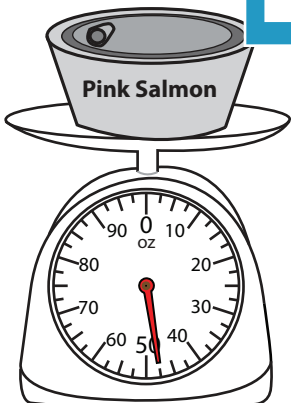
**Sign up**

[www.mathworksheets4kids.com](http://www.mathworksheets4kids.com)

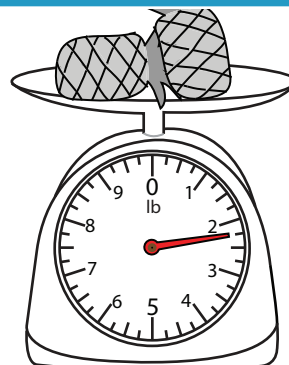


**18  $\frac{1}{2}$**  oz

7)



**2  $\frac{1}{4}$**  lb



**47  $\frac{1}{2}$**  oz

