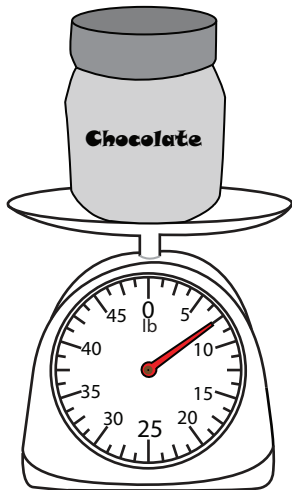


**Measuring Weight - Customary Units**

DS3

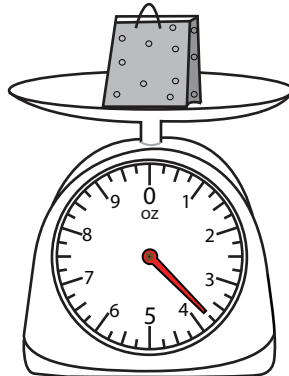
Measure the weight of each object.

1)



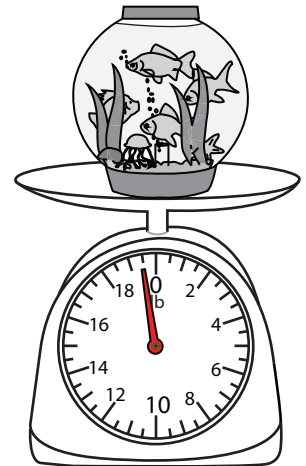
\_\_\_\_\_

2)



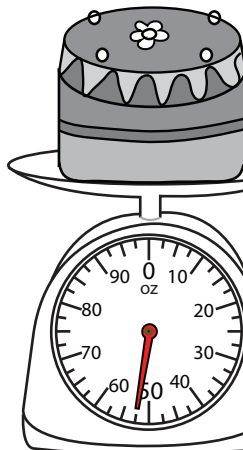
\_\_\_\_\_ lb

3)



\_\_\_\_\_ lb

4)



\_\_\_\_\_ oz

**PREVIEW**

Access the largest collection of  
worksheets for just **\$19.95** per year!

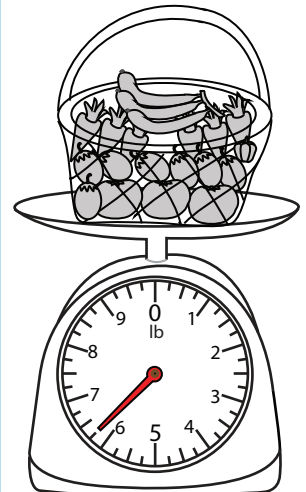
Members, please  
log in to  
download this  
worksheet.

**Log in**

Not a member?  
Please sign up to  
gain complete  
access.

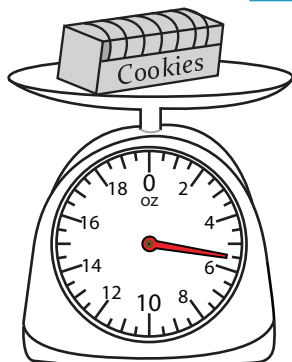
**Sign up**

[www.mathworksheets4kids.com](http://www.mathworksheets4kids.com)

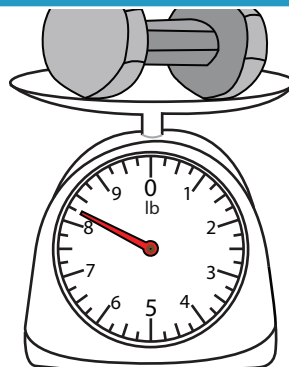


\_\_\_\_\_ lb

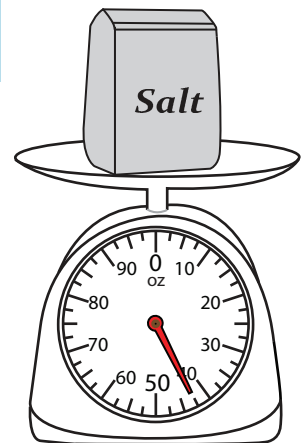
7)



\_\_\_\_\_ oz



\_\_\_\_\_ lb

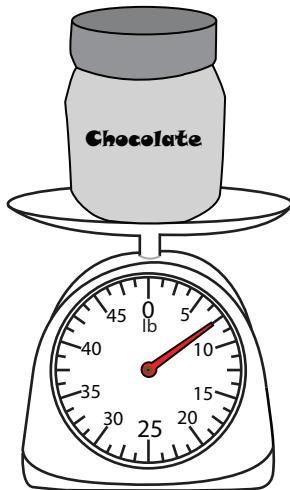


\_\_\_\_\_ oz

**Measuring Weight - Customary Units**

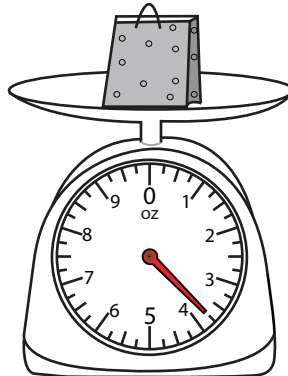
Measure the weight of each object.

1)



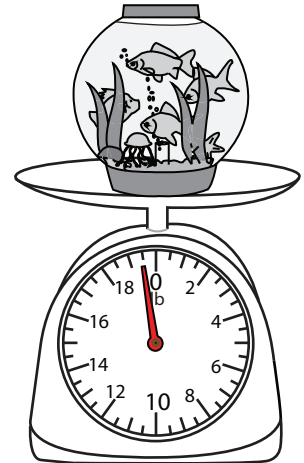
7½

2)



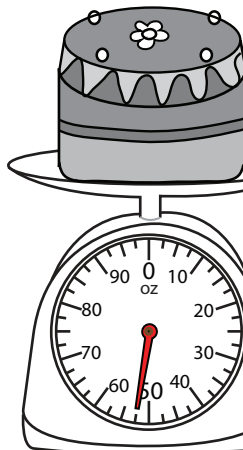
8¼ lb

3)



19½ lb

4)



52½ oz

**PREVIEW**

Access the largest collection of worksheets for just **\$19.95** per year!

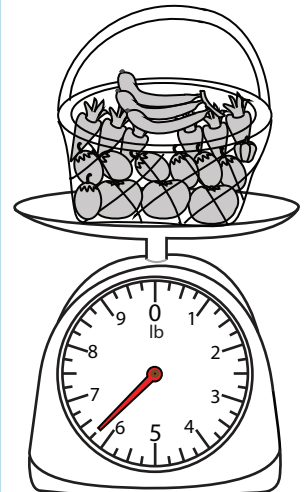
Members, please log in to download this worksheet.

**Log in**

Not a member? Please sign up to gain complete access.

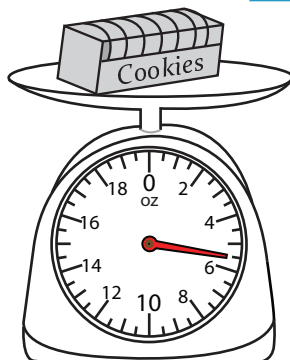
**Sign up**

[www.mathworksheets4kids.com](http://www.mathworksheets4kids.com)

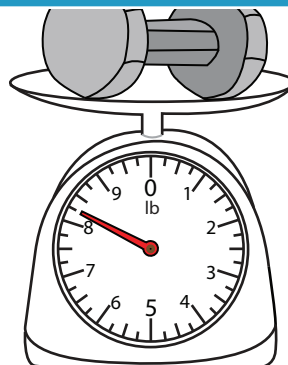


6¼ lb

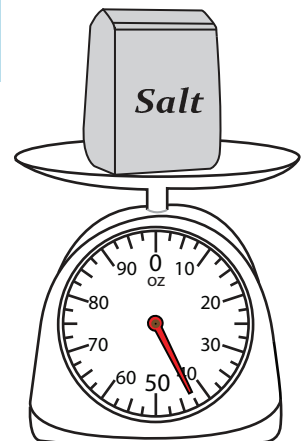
7)



5½ oz



8¼ lb



42½ oz