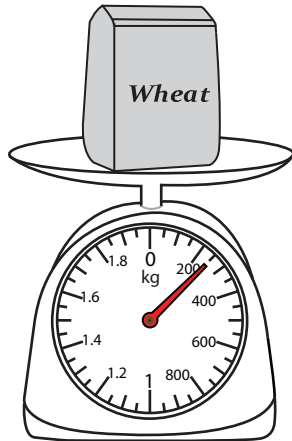


**Measuring Weight - Metric Units**

DS1

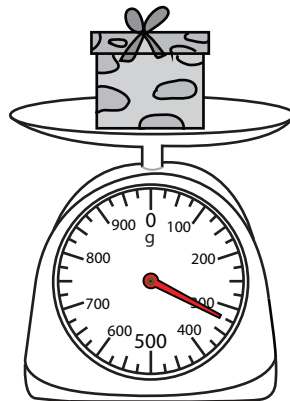
Measure the weight of each object.

1)



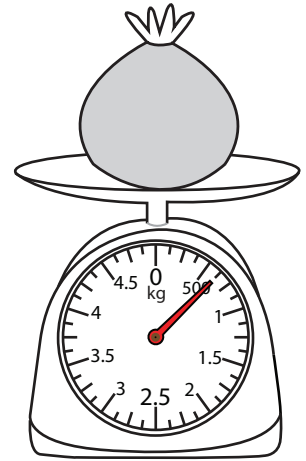
\_\_\_\_\_

2)

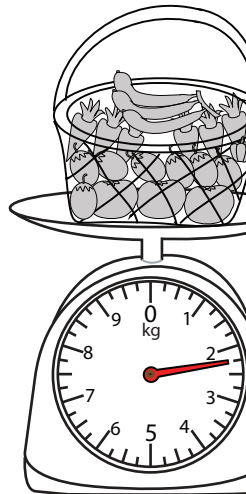


\_\_\_\_\_ g

3)



4)



\_\_\_\_\_

Access the largest collection of worksheets for just **\$19.95** per year!

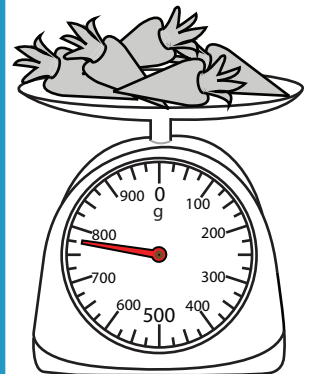
Members, please log in to download this worksheet.

**Log in**

Not a member? Please sign up to gain complete access.

**Sign up**

[www.mathworksheets4kids.com](http://www.mathworksheets4kids.com)

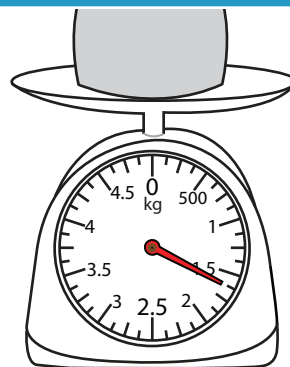


\_\_\_\_\_ g

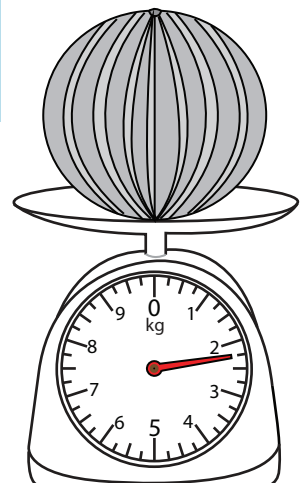
7)



\_\_\_\_\_ kg



\_\_\_\_\_ kg



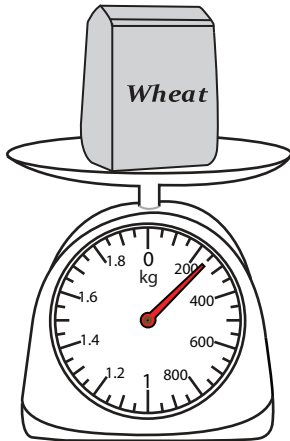
\_\_\_\_\_ kg

**Measuring Weight - Metric Units**

DS1

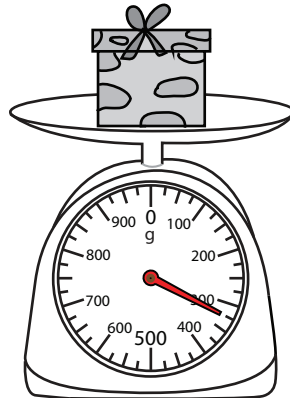
Measure the weight of each object.

1)



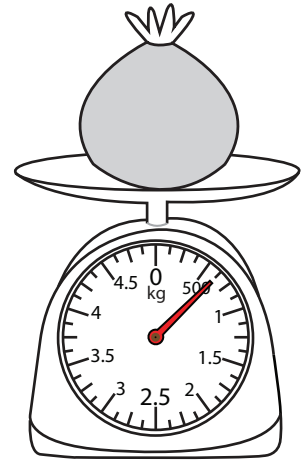
**250**

2)



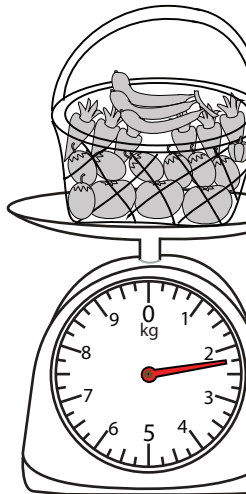
**625** g

3)



**2.25**

4)



**775** g

**PREVIEW**

Access the largest collection of worksheets for just **\$19.95** per year!

Members, please log in to download this worksheet.

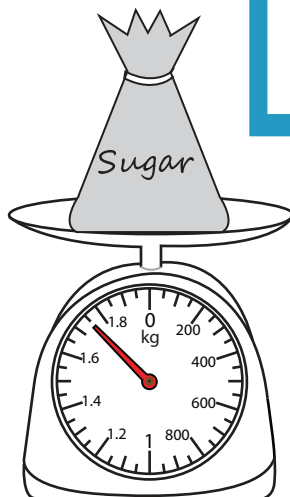
**Log in**

Not a member? Please sign up to gain complete access.

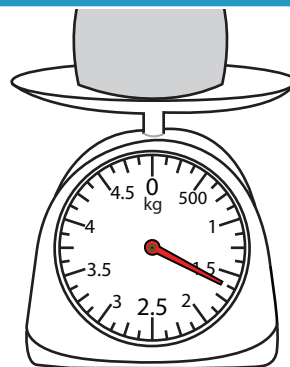
**Sign up**

[www.mathworksheets4kids.com](http://www.mathworksheets4kids.com)

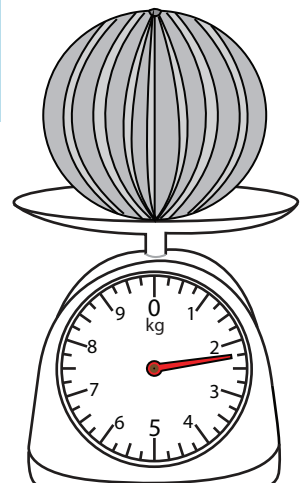
7)



**1.75** kg



**1.625** kg



**2.25** kg