

# Addition

No regrouping: S2

$$\begin{array}{r} 1) \quad 423 \\ + \quad 52 \\ \hline \end{array}$$

$$\begin{array}{r} 2) \quad 735 \\ + \quad 13 \\ \hline \end{array}$$

$$\begin{array}{r} 3) \quad 36 \\ + \quad 523 \\ \hline \end{array}$$

$$\begin{array}{r} 4) \quad 64 \\ + \quad 230 \\ \hline \end{array}$$

$$\begin{array}{r} 5) \quad 15 \\ + \quad 982 \\ \hline \end{array}$$

$$\begin{array}{r} 6) \quad 152 \\ + \quad 840 \\ \hline \end{array}$$

$$\begin{array}{r} 8) \quad 317 \\ + \quad 41 \\ \hline \end{array}$$

$$\begin{array}{r} 9) \quad 601 \\ + \quad 90 \\ \hline \end{array}$$

$$\begin{array}{r} 12) \quad 416 \\ + \quad 53 \\ \hline \end{array}$$

## PREVIEW

Gain complete access to the largest collection of worksheets in all subjects!

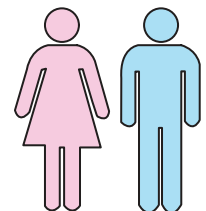
Members, please log in to download this worksheet.

Not a member? Please sign up to gain complete access.

[www.mathworksheets4kids.com](http://www.mathworksheets4kids.com)

- 13) Philip Tradin employees.

nd 75 female he company?



- 14) Emerald Cruise Traveler has 235 cabins in the upper deck. The main deck has 42 more cabins than the upper deck. How many cabins are in the main deck?

