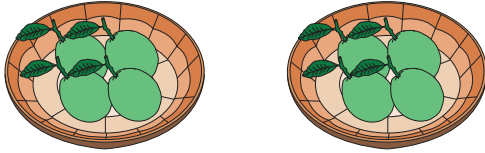


Equal Groups: Multiplication Sentence

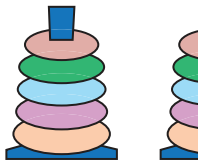
Complete the multiplication equation that describes each model.

1)



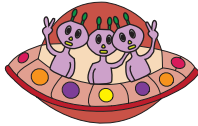
$$\square \times 4 = 8$$

2)

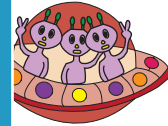


$$\square \times 5 = 10$$

3)



$$5 \times \square = 10$$



4)



$$3 \times \square = 9$$

5)



$$\square \times 2 = 10$$

PREVIEW

Gain complete access to the largest
collection of worksheets in all subjects!

Members, please
log in to
download this
worksheet.

Not a member?
Please sign up to
gain complete
access.

www.mathworksheets4kids.com