

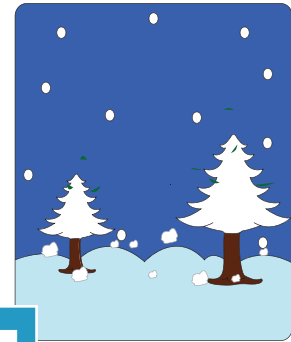
Read and Interpret the Data

Level 1: S2

Read the given stem-and-leaf plots and answer the questions.

- 1) The average monthly precipitation (snowfall in mm) over the year (Jan-Dec) in Berlin, Germany is recorded below.

Stem	Leaf		
3	8	8	9
4	1	2	8
5	0	5	7
6	3	4	
7			



Key : 3|

- a) How many months have more than 30 mm of snowfall?
 b) How many months have more than 60 mm of snowfall?
 c) What is the median monthly snowfall?

PREVIEW

Gain complete access to the largest collection of worksheets in all subjects!

Members, please log in to download this worksheet.

Not a member? Please sign up to gain complete access.

www.mathworksheets4kids.com

- 2) Bettie's teacher recorded the scores of students in grade V as follows:

Stem	Leaf
6	0 1 2 3 4 5 6 7 8 9
7	0 1 2 3 4 5 6 7 8 9
8	0 1 2 3 4 5 6 7 8 9
9	0 1 2 3 4 5 6 7 8 9

ents. The scores were



Key : 9|0 = **90 marks**

- a) What is the top score?
 b) Write the total number of students in grade V?
 c) How many students have scores less than 70?
