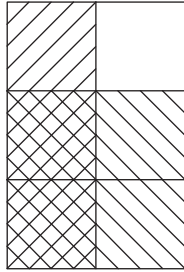


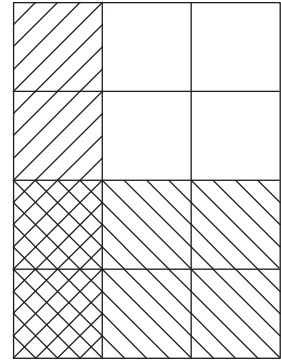
Multiplying Missing Fractions - Area Model

Complete each multiplication equation using the area model.

1)



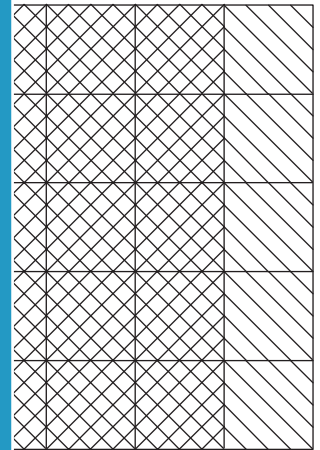
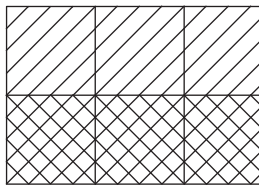
2)



$$\frac{1}{2} \times \frac{2}{3}$$

$$\frac{2}{4} = \frac{2}{12}$$

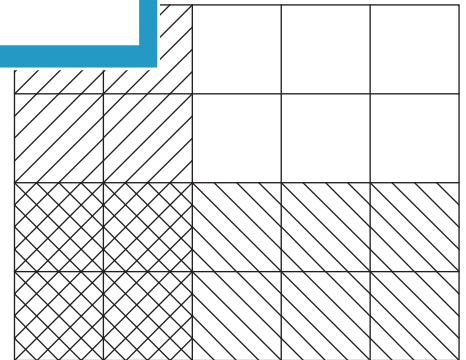
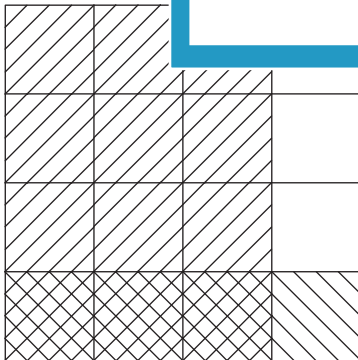
3)



$$\frac{4}{6} \times \underline{\hspace{2cm}}$$

$$\frac{5}{5} = \underline{\hspace{2cm}}$$

5)



$$\underline{\hspace{2cm}} \times \frac{1}{4} = \frac{3}{16}$$

$$\frac{2}{5} \times \underline{\hspace{2cm}} = \frac{4}{20}$$

PREVIEW

Gain complete access to the largest collection of worksheets in all subjects!

Members, please log in to download this worksheet.

Not a member? Please sign up to gain complete access.

www.mathworksheets4kids.com