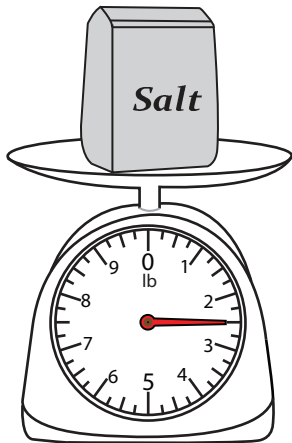


**Measuring Weight - Customary Units**

MS1

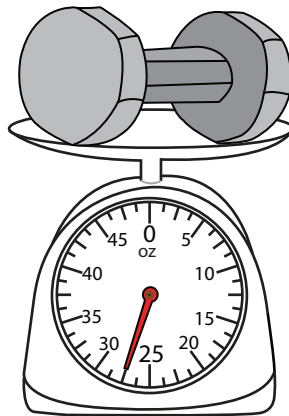
Measure the weight of each object.

1)



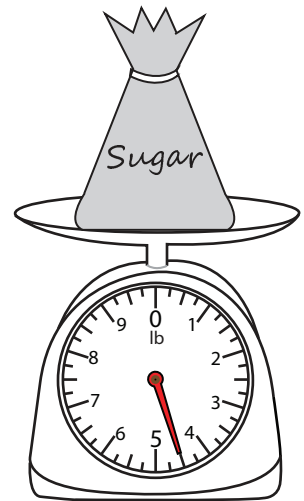
\_\_\_\_\_

2)



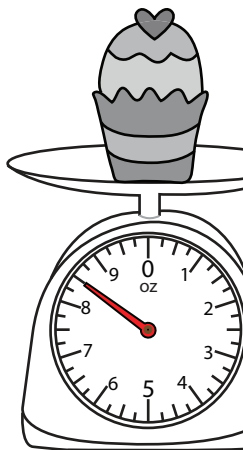
\_\_\_\_\_ lb

3)



\_\_\_\_\_ lb

4)



\_\_\_\_\_ oz

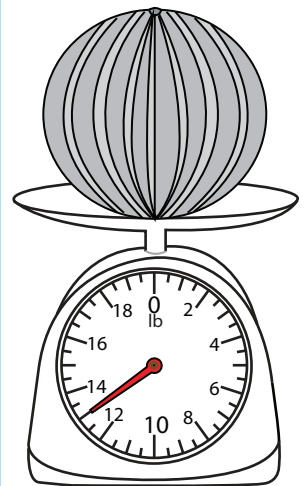
**PREVIEW**

Gain complete access to the largest collection of worksheets in all subjects!

Members, please log in to download this worksheet.

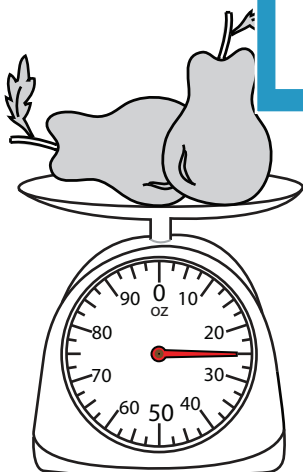
Not a member? Please sign up to gain complete access.

[www.mathworksheets4kids.com](http://www.mathworksheets4kids.com)

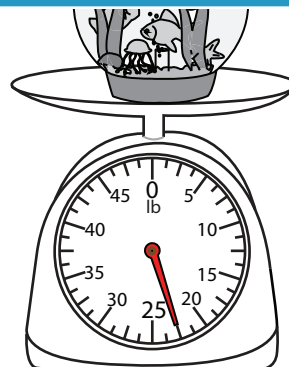


\_\_\_\_\_ lb

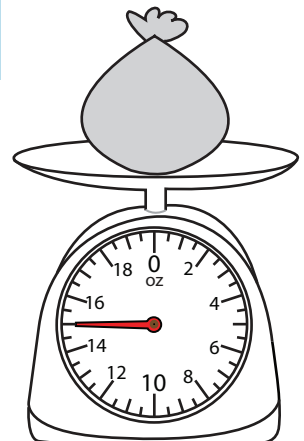
7)



\_\_\_\_\_ oz



\_\_\_\_\_ lb



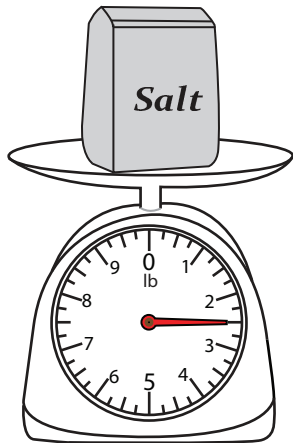
\_\_\_\_\_ oz

**Measuring Weight - Customary Units**

MS1

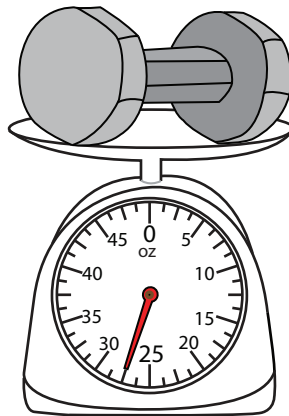
Measure the weight of each object.

1)



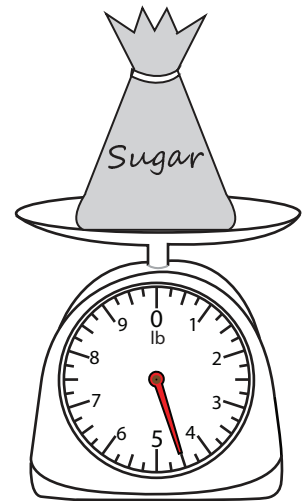
2½

2)



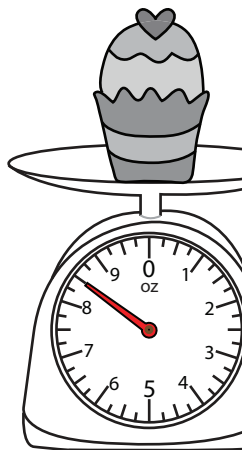
22½ lb

3)



4½ lb

4)



8½ oz

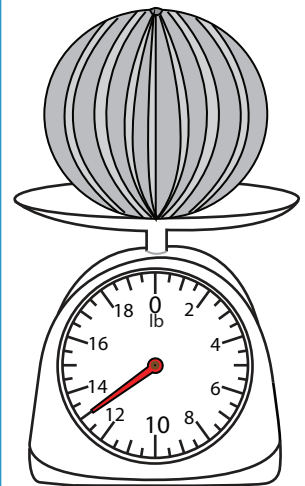
**PREVIEW**

Gain complete access to the largest collection of worksheets in all subjects!

Members, please log in to download this worksheet.

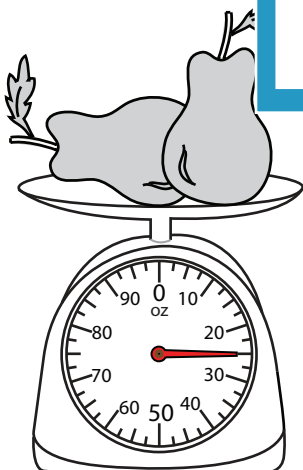
Not a member? Please sign up to gain complete access.

[www.mathworksheets4kids.com](http://www.mathworksheets4kids.com)

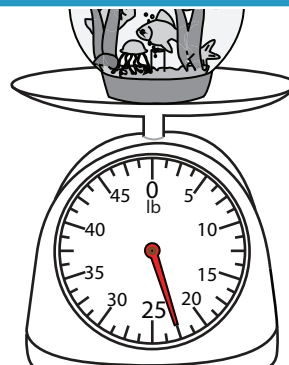


13 lb

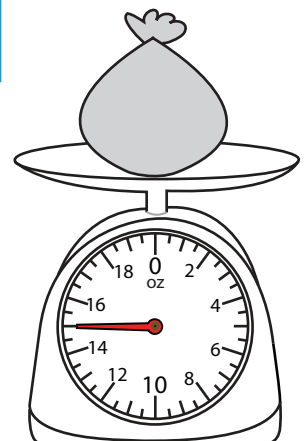
7)



25 oz



22½ lb



15 oz